

INSTRUCTIONS FOR:

# PRESSURE WASHERS

Models: **PCM1500.V2/1750.V2**

Thank you for purchasing a Sealey product. Manufactured to a high standard this product will, if used according to these instructions and properly maintained, give you years of trouble free performance.

**IMPORTANT: PLEASE READ THESE INSTRUCTIONS CAREFULLY. NOTE THE SAFE OPERATIONAL REQUIREMENTS, WARNINGS & CAUTIONS. USE THE PRODUCT CORRECTLY AND WITH CARE FOR THE PURPOSE FOR WHICH IT IS INTENDED. FAILURE TO DO SO MAY CAUSE DAMAGE AND/OR PERSONAL INJURY AND WILL INVALIDATE THE WARRANTY. PLEASE KEEP INSTRUCTIONS SAFE FOR FUTURE USE.**

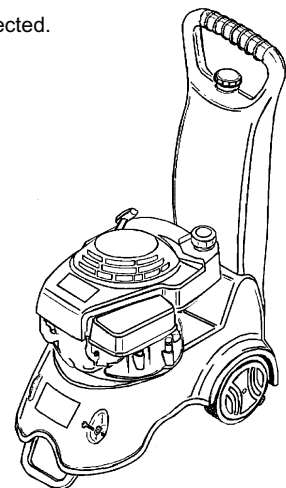
## 1. SAFETY INSTRUCTIONS

- ✓ For safety instructions relative to the maintenance and use of the petrol engine refer to the engine instruction manual.
- ❑ **WARNING! Check the engine oil level before each startup.** Only use an approved oil and never operate the engine with insufficient oil.
- ❑ **WARNING! Do not operate** the washer if damaged. Replace or repair using recommended parts only. Non-authorised parts may be dangerous and will invalidate your warranty. Use authorised Service agent only.
- ✓ Keep the washer in good condition. Regular maintenance will give the best and safest performance.
- ❑ **WARNING! Stop the engine and disconnect the mains water supply before changing accessories or performing any maintenance.**
- ✓ Ensure you comply with the water supply company regulations before connecting to the mains. If you are connecting to the mains drinking water supply ensure you have a back flow preventer valve installed.  
The water supply hose must be reinforced and have an internal diameter of 13mm (1/2"). The minimum water supply rate must be at least equal to the cleaner capacity. The water temperature must not exceed 50°C, and the water supply must not exceed 10Bar.
- ❑ **WARNING! DO NOT** operate the washer without the water supply connected. To do so will damage the machine.
- ✓ Position the washer as near as possible to the mains water supply.
- ✓ Only use recommended washing detergents. Failure to do so may cause corrosion to equipment and hoses.
- ❑ **WARNING! Use the washer on a flat, level surface, in a horizontal position.** Failure to do so will invalidate your warranty.
- ✓ Wear safety goggles and adequate protective clothing, and anti-slip rubber soled footwear.
- ❑ **WARNING! The high pressure jet must be used with caution.** Ensure you aim the lance correctly at the work surface. Failure to do so may scatter loose particles at the same force as the water pressure, resulting in possible damage or personal injury.
- ✓ Keep all persons and animals at a safe distance from the hose working area. It is difficult to give an exact safe distance as it will depend upon your circumstances. We recommend at least 15 meters (16 yards). Also ensure other persons are aware before you start to depress the washer trigger.
- ✓ Hold the gun firmly for it will tend to "kick" backwards when you first pull the trigger.
- ✗ DO NOT allow children or untrained persons to operate the washer.
- ✗ DO NOT connect other appliances to the washer inlet or outlet. Only use the supplied or recommended outlet nozzle.
- ✗ DO NOT use the washer if the water supply hose is damaged. Also check that the hose is laid out straight and safely.
- ✗ DO NOT operate the washer in an enclosed area as the motor exhaust fumes are a health hazard.
- ✗ DO NOT jam the operating trigger in the operating position, and DO NOT pull the trigger without holding and aiming the gun correctly.
- ❑ **WARNING! DO NOT** attempt to alter the pressure regulating valve as this may cause serious damage.
- ✗ DO NOT use the washer with flammable, toxic or corrosive liquids.
- ✗ DO NOT leave the washer unattended whilst operating, and DO NOT remove the fuel cap whilst the engine is running.
- ✗ DO NOT refuel the engine whilst it is running. Stop the engine and allow it to cool for two minutes before attempting to refuel.
- ✗ DO NOT refuel in a closed or poorly ventilated environment as there is a danger of explosion or fire. Refuel out doors.
- ✗ DO NOT smoke or place the washer near any naked flames whilst re-fuelling.
- ✗ DO NOT operate washer if there is a fuel leak. Move the unit and avoid any combustion until the leak has been fixed and the machine is dry.
- ✗ DO NOT start the engine if there are any flammable materials near the exhaust system or in the path of the exhaust gases.
- ✗ DO NOT block the engine ventilation grills.
- ✗ DO NOT move the washer by pulling on the high pressure hose or the mains water supply hose. Use the machine handle.
- ✗ DO NOT direct jet against yourself, other persons or animals, electrical equipment or the machine itself.
- ❑ **WARNING! DO NOT** leave the engine running for more that 1-2 minutes without operating the trigger, as temperature/pressure increase may damage the sealing system.
- ✗ DO NOT use the washer if you are tired, under the influence of alcohol, drugs or intoxicating medication.
- ✗ DO NOT check ignition system by removing the spark plug or spark plug lead. Use specific tester or contact service agent.
- ❑ **WARNING! DO NOT touch spark plug or plug lead with wet (or dry) hands whilst the engine is running - severe, potentially fatal, electric shock may result.**
- ✓ Ensure that the hose pressure is discharged before disconnecting the mains water hose.
- ✓ When not in use, disconnect from the water supply. Clean and dry the washer and store in a safe, dry, childproof area. For long term storage ensure the fuel is drained and that the washer is adequately protected against frost. DO NOT allow the machine to become frozen.
- ✓ Ensure engine fuel is stored in an approved container.

## 2. SPECIFICATIONS & APPLICATION

### 2.1. Specifications

Model No.	PCM1500.V2	PCM1750.V2
Manifold Pressure	1500 psi	1750 psi
Pressure at Nozzle	1500 psi	1750 psi
Water Flow l/h	.420	.420
Engine Type	Briggs & Stratton	Briggs & Stratton
Engine Power	.3.7 hp	.5.0 hp
Max Inlet Temp	.50°C	.50°C
Trolley Included	.Yes	.Yes
Hose Length	.7.5 m	.7.5 m
Weight	.30 kg	.33 kg



## 2.2. Application.

These petrol powered pressure washers are for use where a power supply is not readily available. Ideal for boat yard, agricultural or industrial user. Models feature a reliable axial plate pump coupled to a 4-Stroke Briggs & Stratton power unit. The washer has a detergent tank incorporated in the handle, and a trigger operated lance with spray/jet control nozzles. Using clean water and correct detergent the washer will remove stubborn dirt from vehicles, machines, boats, buildings, etc.

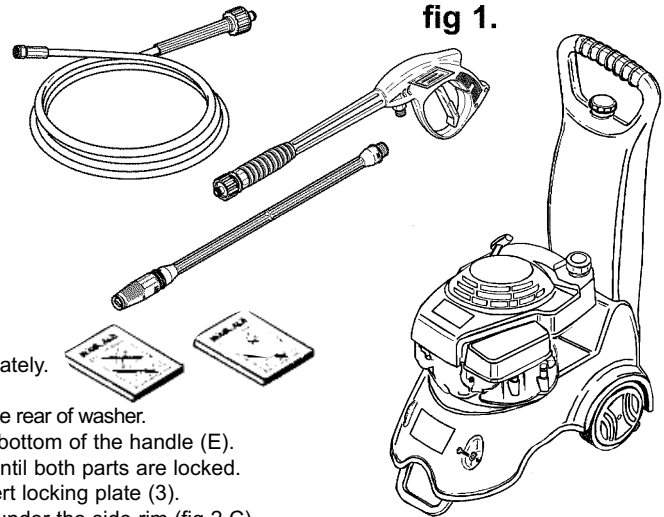


fig 1.

## 3. ASSEMBLY

Unpack contents and check to ensure all parts (fig 1) are in good condition. If you experience any problems contact your dealer immediately.

- 3.1. Pass the 4 screws (fig 2. A) through handle and into the frame at the rear of washer.
- 3.2. Connect the detergent hose (B) to the detergent outlet at the bottom of the handle (E).
- 3.3. Connect the gun to the lance (fig 3) by rotating and pushing until both parts are locked.
- 3.4. Attach the gun (fig 4.1) to the high pressure hose (2) and insert locking plate (3).
- 3.5. Connect the high pressure hose to the washer outlet located under the side rim (fig 2 C).
- 3.6. Connect the mains water supply hose to the washer inlet located under the side rim (fig 2 D).

**Note:** The water supply hose must be reinforced and have an internal diameter of 13mm (1/2"). The minimum water supply rate must be at least equal to the cleaner capacity. The water temperature must not exceed 50°C, and the water supply must not exceed 10 Bar.

fig 2.

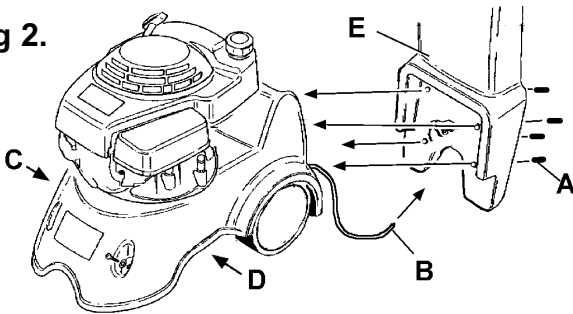


fig 3.

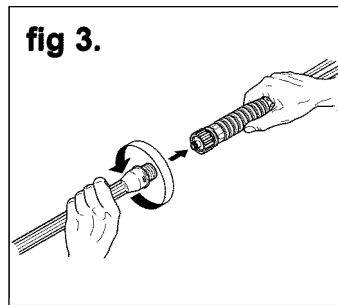
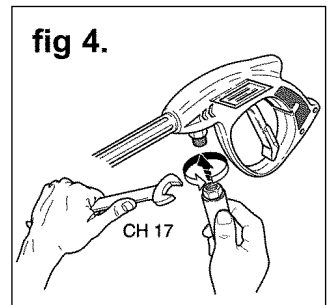


fig 4.



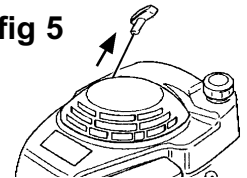
## 4. OPERATION

- WARNING!** Ensure you have read, understood and apply Section 1 safety instructions.
- WARNING!** Dry running can seriously damage the unit.
- WARNING!** DO NOT leave motor running for more than 1-2 minutes without operating the trigger, as temperature/pressure increase may damage sealing system.

### 4.1. Starting procedure.

- 4.1.1 Check engine oil level before each use
- 4.1.2. Check that the mains feed hose is laid straight and fully open the water tap. Check to ensure there are no leaks from hoses or connections.
- 4.1.3. Fill detergent tank with correct mixture. NOTE: It is very important to ensure that you carefully follow the handling and dilution directions printed on the detergent container.
- 4.1.4. Undo safety catch and depress trigger to allow any air to escape, hold for 10 seconds and release.
- 4.1.5. Start the engine (fig 5) whilst keeping the trigger pressed until water flows from the nozzle.

fig 5

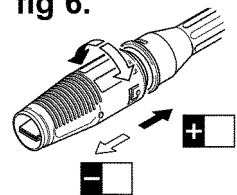


### 4.2. Nozzle spray adjusting (fig 6).

The three nozzle functions must be understood before operating the washer.

- a) LOW PRESSURE (fig 6 nozzle forward): To spray detergent/water mix at controlled rate for cleaning.
- b) HIGH PRESSURE (fig 6 nozzle back): To spray a high powered force of clean water for washing down.
- c) To adjust the water flow from a thin pencil jet to a fanned output (fig 7).

fig 6.



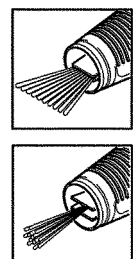
### CAUTIONS!

- a) Avoid sudden bursts of water as this will cause the water pressure to drop and put extreme pressure on the hoses and connections.
- b) The water fan must only be adjusted with the trigger released (closed).
- c) If another person is using water from the same supply as the washer, the water pressure will drop and the washer will not operate correctly. Switch the engine off immediately and wait until the pressure is restored.

### 4.3. Cleaning

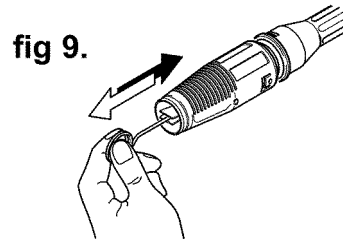
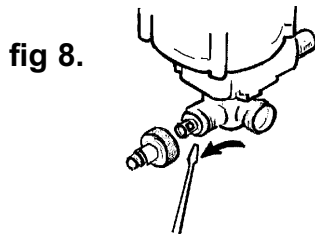
- 4.3.1. Push nozzle forward - LOW PRESSURE - and rotate to fan jet. Only apply detergent at the low pressure rate.
- 4.3.2. Depress the trigger to apply the detergent to the dry surface of the item which is to be cleaned. Vertical surfaces must be cleaned from the bottom upwards.
- 4.3.3. Leave the detergent to act for 1-2 minutes, but do not allow the surface to dry.
- 4.3.4. Pull Nozzle back - HIGH PRESSURE - and use fan or pencil jet for washing.
- 4.3.5. Hold nozzle firmly at least 30cm (10") from the surface and commence washing with high pressure clean water. Work from the bottom upwards, and avoid the water running on to unwashed surfaces.
- 4.3.6. When you have finished washing, turn the engine and mains water tap off.
- 4.3.7. Discharge residual pressure from the washer by pressing the trigger until no more water comes out of the nozzle.
- 4.3.8. Engage the trigger safety catch, wipe the washer and store in a dry, safe, childproof area.

fig 7



## 5. MAINTENANCE

- 5.1. Check and clean suction and detergent filters every 50 operating hours. Undo hose and gently prise filter out with a screw driver (fig 8).
- 5.2. Clean gun nozzle with the pin provided (fig 9). Detach lance from gun, remove any dirt from the nozzle head and rinse with clean water.
- 5.3. Winter storage: Operate the washer with non-corrosive/non-toxic anti-freeze before storing in a frost free, safe, dry area for the winter.
- 5.4. Change engine oil after 5 hours of operation. Thereafter, change oil monthly or every 50 hours of operation. Change oil more often if engine is operated under heavy load, or in high ambient air temperatures. During normal operation, partially burned fuel, small particles of metal from the cylinder walls, pistons, bearings and combustion deposits will gradually contaminate the oil. If the oil is not changed regularly, these foreign particles can cause increased friction and a grinding action which shortens the life of the engine. Fresh oil also assists in cooling. Old oil gradually becomes thick and loses its cooling ability as well as its lubricating qualities. For further details of engine maintenance refer to the engine maintenance manual.



## 6. TROUBLESHOOTING GUIDE

PROBLEM	REASON	REMEDY
Pump does not operate at required pressure	Nozzle incorrect or worn Air being sucked into the system Water leakage	Replace the nozzle Check that hoses and fittings are air tight
Pressure drops during use	Valves dirty or worn Nozzle worn Dirty filter	Clean or replace valve Replace the nozzle Clean or replace
Pump noisy	Pump sucking air Valves dirty or worn Water too hot Dirty filter	Check that hoses and fittings are air tight Clean or replace valve Reduce temperature Clean or replace
Oil leaks	Oil seals worn	Check and replace
Fluctuating pressure	Valves worn, dirty or stuck Pump sucking air Worn piston packing Dirty filter	Check, clean or replace Check that hoses and fittings are air tight Check and replace Check and clean

**Declaration of Conformity** We, the sole importer into the UK of Sealey Power Products, declare that the products listed below are in conformity with the following EEC standards and directives.

**Pressure Washer PCM1500.V2/1750.V2**

73/23/EEC Low Voltage Directive  
89/336/EEC EMC Directive  
93/68/EEC CE Marking Directive



The construction files for these products are held by the Manufacturer and may be inspected by a national authority upon request to Jack Sealey Ltd.

Signed by Mark Sweetman

21st May 2003

For Jack Sealey Ltd. Sole importer into the UK of Sealey Power Products

**NOTE:** It is our policy to continually improve products and as such we reserve the right to alter data, specifications and component parts without prior notice.

**IMPORTANT:** No liability is accepted for incorrect use of this equipment

**WARRANTY:** Guarantee is 12 months from purchase date, proof of which will be required for any claim.

**INFORMATION:** For a copy of our latest catalogue call us on 01284 757525 and leave your full name and address, including postcode.

**SEALEY POWER PRODUCTS**

Sole UK Distributor,  
Sealey Group,  
Bury St. Edmunds, Suffolk.



01284 757500



01284 703534



sales@sealey.co.uk



www.sealey.co.uk