



# INSTRUCTIONS FOR: MOTORCYCLE LIFT 680KG CAPACITY HEAVY-DUTY AIR/HYDRAULIC

MODEL No: **MC680A**

Thank you for purchasing a Sealey product. Manufactured to a high standard, this product will, if used according to these instructions, and properly maintained, give you years of trouble free performance.

**IMPORTANT: PLEASE READ THESE INSTRUCTIONS CAREFULLY. NOTE THE SAFE OPERATIONAL REQUIREMENTS, WARNINGS & CAUTIONS. USE THE PRODUCT CORRECTLY AND WITH CARE FOR THE PURPOSE FOR WHICH IT IS INTENDED. FAILURE TO DO SO MAY CAUSE DAMAGE AND/OR PERSONAL INJURY AND WILL INVALIDATE THE WARRANTY. KEEP THESE INSTRUCTIONS SAFE FOR FUTURE USE.**

## 1. SAFETY

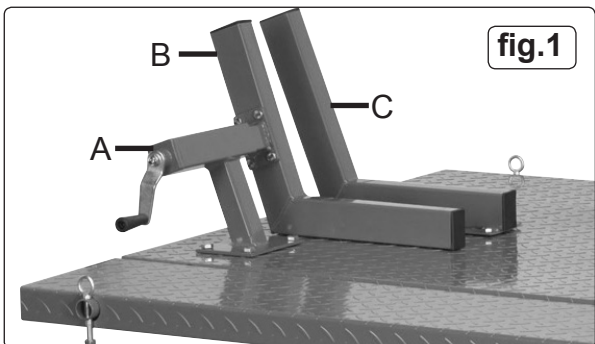
- ✓ Disconnect lift from air supply before changing parts, servicing or performing any maintenance.
  - ⚠ **WARNING!** Ensure correct air pressure is maintained and not exceeded. Recommended pressure 120-200psi. Required air flow 9.5cfm.
  - ✓ Keep air hose away from heat, oil and sharp edges. Check air hose for wear before each use, and ensure that all connections are secure.
  - ✓ Ensure lift is kept clean and in good working order. Immediately repair or replace damaged parts.
  - ✓ Use recommended parts only. Incorrect parts may be dangerous and will invalidate the warranty.
  - ✓ Use a qualified person to lubricate and maintain the lift. **DO NOT** use brake fluid to top up system. Use Sealey hydraulic oil only.
  - ✓ Locate lift in a suitable, well lit work area. Keep area clean and tidy and free from unrelated materials.
  - ✓ Use lift on level and solid ground, preferably concrete. *Avoid tarmac since lift may sink in.*
  - ✓ Ensure all nonessential persons keep a safe distance.
  - ✓ Always keep your hands and feet away from moving parts.
  - x **DO NOT** operate the lift if parts are missing or damaged.
  - x **DO NOT** use the lift for purposes other than that which it is designed for.
  - x **DO NOT** adjust the safety overload valve.
  - ✓ Use a qualified person to maintain the lift in good condition. Keep it clean for best and safest performance.
  - ✓ The maximum load is 680Kg. **DO NOT** exceed this rated capacity.
  - ✓ Use this lift for lifting purpose only. **DO NOT** use it for any other purpose it is not designed to perform.
  - ✓ Keep children and unauthorised persons away from the work area.
  - ✓ Remove ill fitting clothing. Remove ties, watches, rings and other loose jewellery, and contain long hair.
  - ✓ Keep proper balance and footing, **DO NOT** overreach and wear nonslip footwear.
  - ✓ Only use this lift on a surface that is stable, level, dry and capable of sustaining the load.
  - ✓ Ensure the motorcycle is adequately secured to the lifting platform with appropriate straps.
  - ✓ When the platform has been raised to the working height, ensure the locking bar is engaged to prevent accidental lowering.
  - ✓ Before lowering lift ensure that there are no obstructions underneath and that all persons are standing clear.
  - x **DO NOT** attempt to transport a load on the lift. The lift must only be used in a static position for lifting and lowering loads. Ensure that the load remains stable at all times.
  - x **DO NOT** use the lift if damaged, any suspect parts are noted or it has been subjected to a shock load.
  - x **DO NOT** operate the lift when you are tired or under the influence of alcohol, drugs or any intoxicating medication.
  - x **DO NOT** allow untrained persons to operate the lift.
  - x **DO NOT** make any modifications to the lift.
  - x **DO NOT** get the lift wet.
  - x **DO NOT** yank the hose from the air supply, and **DO NOT** direct air from the air hose at yourself or others.
  - ✓ When not in use disconnect lift from the air supply, and store in the down position in a safe, dry, childproof area.
- ⚠ **WARNING: The warnings, cautions and instructions discussed in this instruction manual cannot cover all possible conditions and situations that may occur. It must be understood by the operator that common sense and caution are factors which cannot be built into this product, but must be applied by the operator.**

## 2. INTRODUCTION

All steel construction with both hydraulic pump and air motor assembly. Combined air and foot pump separate from main lift for choice of operation. Ramp and platform made with chequer plate surface to ease loading and positioning of motorcycle. Supplied with motorcycle front wheel locking attachment, securing vehicle to provide easy maintenance access. Fitted with safety lock to prevent accidental lowering. Suitable for use with centre stand motorcycles or with paddock stand.

## 3. SPECIFICATION

Model No: ..... **MC680A**  
 Capacity:..... 680kg  
 Minimum Height: ..... 190mm  
 Maximum Height: ..... 790mm  
 Width: ..... 710mm  
 Length: ..... 2000mm



## 4. ASSEMBLY

### 4.1. Content

#### 4.1.1. The Lift comprises:

Main lift assembly. Leading plate. Air/hydraulic pump assembly. Motorcycle Wheel Clamp. Bolts, nuts and washers.

### 4.2. Assembly (Refer to Parts Diagram below)

#### 4.2.1. Lay the sliding plate (8) onto the platform.

#### 4.2.2. Connect the oil hose coupler (30) to the port on the hydraulic pump.

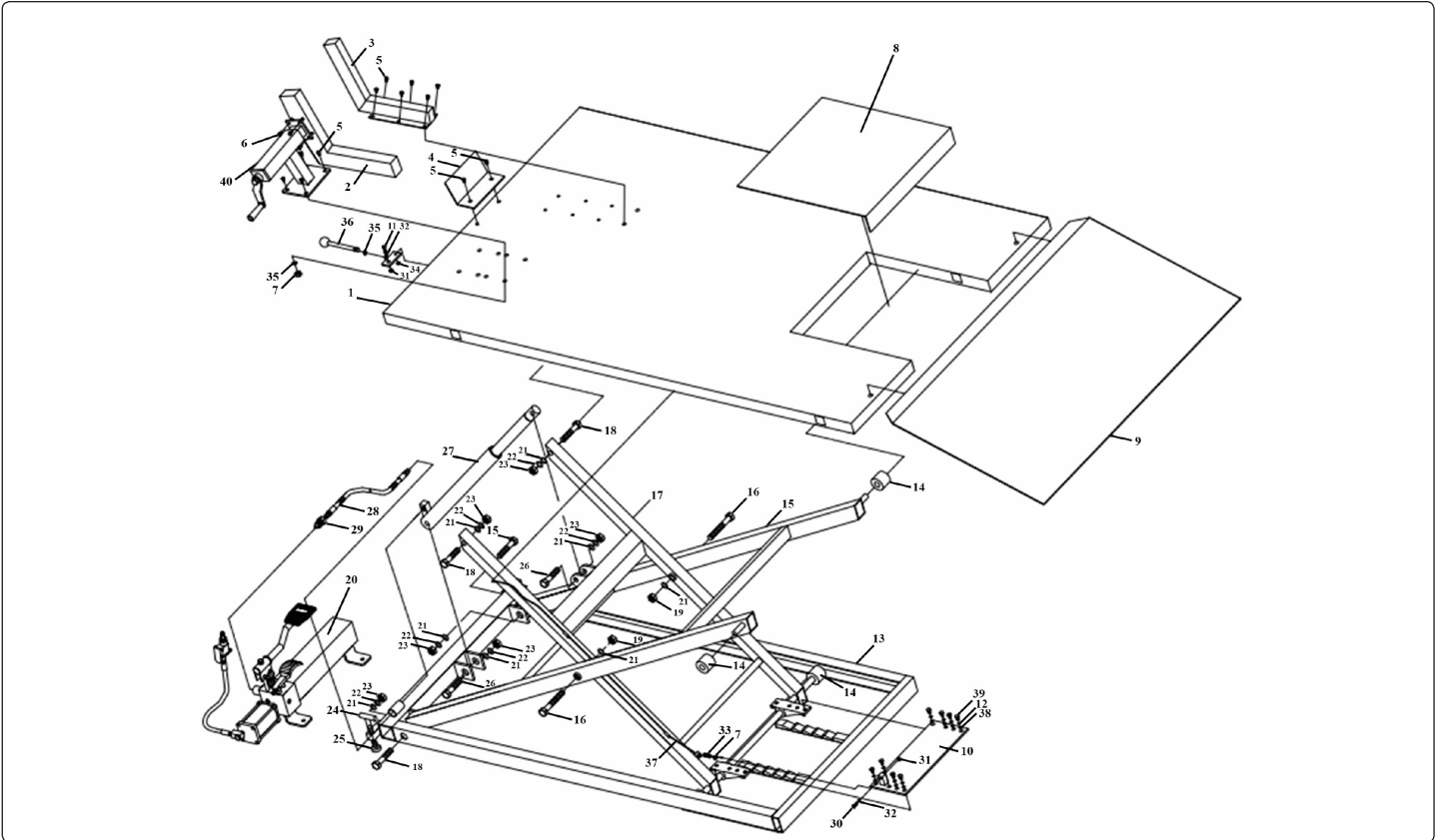
#### 4.2.3. Attach the leading plate (9) to the end of the platform.

### 4.3. Motorcycle Wheel Clamp

#### 4.3.1. Remove the clamp from the box and take the handle section (Fig.1A) and bolt to the top of the lift, through the pre-drilled holes, using large bolts, nuts and washers.

#### 4.3.2. Next take the moving jaw (Fig.1B) and bolt it to the handle section with the small bolts supplied.

#### 4.3.3. Finally take the fixed jaw (Fig.1C) and bolt it to the top of the lift, through the remaining holes, using large bolts, nuts and washers.



## 5. AIR SUPPLY

### 5.1. You will require an air pressure of minimum 120psi, maximum 200psi to get the best performance from this lift.

### 5.2. **WARNING!** Ensure the air supply does not exceed 200psi while operating the lift. Too high an air pressure and unclean air will shorten the product's life due to excessive wear, and may be dangerous, causing possible damage and/or personal injury.

### 5.3. Drain the air tank daily. Water in the air line will damage the lift.

### 5.4. Clean the air inlet filter screen weekly.

### 5.5. Keep the air hose between the compressor and the lift as short as possible, and install an air filter and oiler (fig 2).

### 5.6. Line pressure should be increased to compensate for unusually long air hoses (over 8 metres). The minimum hose diameter should be 1/4" I.D. and fittings must have the same inside dimensions.

### 5.7. Keep hose away from heat, oil and sharp edges. Check hoses for wear, and make certain that all connections are secure.

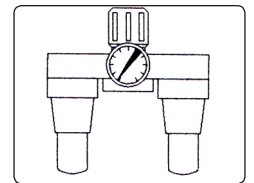


fig.2

## 6. OPERATION

### 6.1. BEFORE FIRST USE

#### 6.1.1. Leave the pump for one hour to allow the oil to settle before purging the system.

**NOTE!** Failure to allow sufficient time for the oil to settle could result in air remaining in the oil. In this event, the pump will not purge completely first time and a second purge will be required.

#### 6.1.2. Connect the air inlet fitting into the air supply hose lock fitting and fully press the release foot pedal, then turn on the air valve letting the pump work for 30 seconds to eliminate any air in the hydraulic system.

#### 6.1.3. Test the lift, unladen, by raising it to full height and then lowering it. Depress release foot pedal slowly to control the rate of descent.

### 6.2. OPERATING INSTRUCTIONS

**WARNING! Ensure that you read, understand and apply the safety instructions and warnings before use.**

**WARNING! Do not attempt to overload the lift.**

#### 6.2.1. Position the lift in a suitable area, checking that the surface on which the lift will stand is solid and flat (preferably concrete).

#### 6.2.2. Stabilise the platform by screwing down the lock down feet to lift the castors (fig.3).

#### 6.2.3. Wheel the motorcycle up the loading plate and onto the platform.

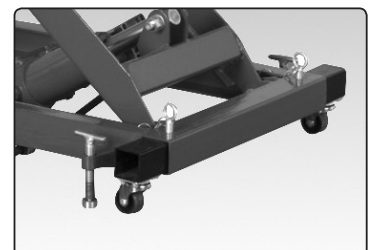
**NOTE** There is a choice of mounting holes for the vice to cater for various sizes of motorcycle.

#### 6.2.4. Clamp front wheel in vice to prevent any movement of the motorcycle.

#### 6.2.5. Strap the motorcycle securely to the platform.

#### 6.2.6. Press on the air valve to raise the lift. The air valve can be locked in the on position, see figs. 4 and 5 below.

fig.3



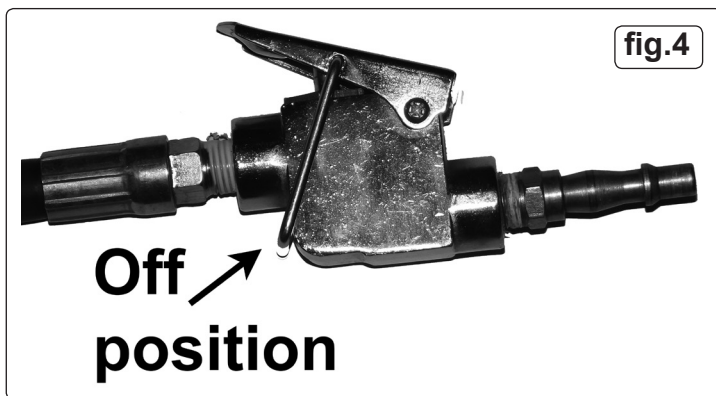


fig.4

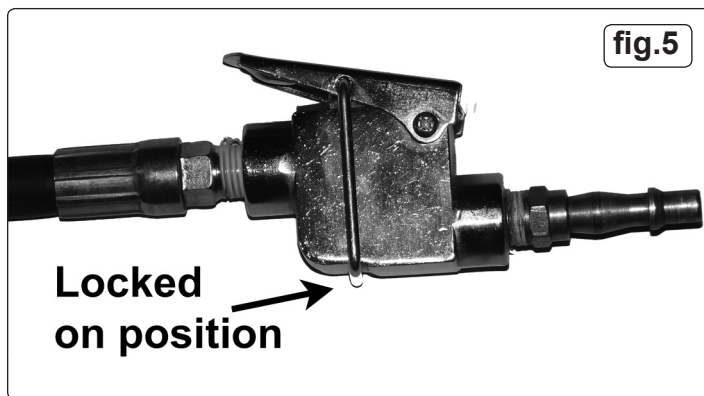


fig.5

**NOTE:** Ensure the safety handle is to the right and the lock plate assembly (10) is locked in a corresponding pair of safety latches (26) to prevent accidental lowering.

6.2.7. When work is completed, remove all tools from underneath the lift before lowering.

6.2.8. Move the safety handle to the left hand side (in the depression) and lower the lift by slowly depressing the release foot pedal to gently lower the motorcycle. Move the safety handle back to the right hand side ready for the next lifting operation.

**NOTE:** Lower the motorcycle slowly, in a controlled fashion. Never allow the motorcycle to lower rapidly.

6.2.9. When the lift is fully lowered, unsecure the motorcycle and remove it from the lift.

## 7. MAINTENANCE

7.1. Clean and lubricate on a regular basis.

7.2. Regularly check oil level via filler hole. With piston fully down remove filler plug, oil should be level with bottom of filler hole. Top-up as necessary. Use a good quality jack oil such as Sealey Hydraulic Jack Oil. **Do not use brake fluid.**  
*Ensure no dirt enters hydraulic system when filling or removing/replacing components.*

7.3. Lubricate the air motor with a good quality jack oil such as Sealey Hydraulic Jack Oil, once or twice a month. Add the oil through the air valve whilst holding down the lever.

7.4. Always dispose of waste oil according to local authority guidelines. If in doubt consult your local authority.

7.5. Keep the lift clean and wipe off any oil or grease. Lubricate all moving parts.

7.6. Before each use check all parts. If any part of the lift is damaged or suspect, remove the lift from service and take necessary action to repair.

## 8. TROUBLESHOOTING

Lift will not lift load.	1. Release valve not fully closed. 2. Oil level low. 3. Air supply low.	1. Close valve firmly. 2. Top-up to correct level. 3. Min. requirement 120psi.
Lift will not hold load.	1. Release valve not fully closed.	1. Close valve firmly.
Lift will not lift smoothly or to full height.	1. Oil level low. 2. Air in hydraulic system.	1. Top-up to correct level. 2. Bleed system.
Lift will not lower completely.	1. Release valve not sufficiently open.	1. Slowly open valve further.

Parts support is available for this product. To obtain a parts listing and/or diagram, please log on to [www.sealey.co.uk](http://www.sealey.co.uk), email [sales@sealey.co.uk](mailto:sales@sealey.co.uk) or phone 01284 757500.



**Environmental Protection**  
 Recycle unwanted materials instead of disposing of them as waste. All tools, accessories and packaging should be sorted, taken to a recycling centre and disposed of in a manner which is compatible with the environment.  
 When the product becomes completely unserviceable and requires disposal, drain off any fluids (if applicable) into approved containers and dispose of the product and the fluids according to local regulations.

**NOTE:** It is our policy to continually improve products and as such we reserve the right to alter data, specifications and component parts without prior notice.

**IMPORTANT:** No liability is accepted for incorrect use of this product.

**WARRANTY:** Guarantee is 12 months from purchase date, proof of which will be required for any claim.

**INFORMATION:** For a copy of our latest catalogue and promotions call us on 01284 757525 and leave your full name and address, including postcode.



Sole UK Distributor, Sealey Group,  
 Kempson Way, Suffolk Business Park,  
 Bury St. Edmunds, Suffolk,  
 IP32 7AR



01284 757500



01284 703534



[www.sealey.co.uk](http://www.sealey.co.uk)



[sales@sealey.co.uk](mailto:sales@sealey.co.uk)