

# 200mm HEAVY DUTY BENCH GRINDER

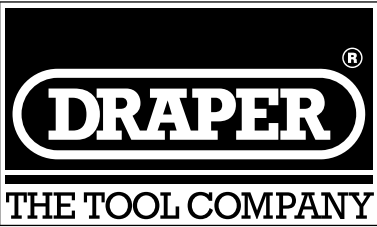
■ STOCK No.29621. ■ PART NO.GHD200.

## SPARE PARTS LISTING

12/2000

KEY No.	PART No.	STOCK No.	DESCRIPTION
1	YGHD150/200-01	30103	Truss hd. screw
2	YGHD200-02	30176	Guard cover
3	YGHD200-03	30177	Nut
4	YGHD200-04	30179	Flange
5	AG200F	29631	200mm Grinding wheel (fine)
6	YGHD150/200-06	30107	Truss hd. screw
7	YGHD150/200-07	30108	Spring washer
8	YGHD200-08	30109	Wheel guard - left hand
9	YGHD150/200-09	30111	Truss hd. screw
10	YGHD150/200-10	30112	Spring washer
11	YGHD200-11A	64401	End bell - left hand
12	YGHD200-12	30181	Ball bearing
13	YGHD200-13	30182	Fan
14	YGHD200-14	30183	Field coil 230V
15	YGHD200-15A	64400	Motor housing
16	YGHD200-16	30185	Armature 230V
17	YGHD200-17	30186	Centrifugal switch terminal board
18	YGHD150/200-18	30120	Truss hd. screw
19	YGHD200-19	30187	Centrifugal start switch
20	YGHD150/200-20	30122	Truss hd. screw
21	YGHD200-21	30188	Spark deflector - left hand
22	YGHD150/200-22	30124	Washer
23	YGHD150/200-23	30125	Hex. hd. cap screw
24	YGHD200-24	30189	Tool rest - left hand
25	YGHD150/200-25	30127	Washer
26	YGHD200-26	30190	Hex. hd. cap screw
27	YH05VVF3	30094	BS Moulded plug & cable
28	YGHD150/200-28	30129	Strain relief
29	YGHD150/200-29	30130	Truss hd. screw
30	YGHD150/200-30	30131	Cord mounting plate
31	YGHD150/200-31	30132	Terminal
32	YGHD150/200-32	30133	Terminal
33	YGHD200-33A	64399	End bell - right hand
34	YGHD200-34	30192	Wheel guard - right hand
35	AG150C	29632	200mm grinding wheel (coarse)

KEY No.	PART No.	STOCK No.	DESCRIPTION
36	YGHD150/200-36	30136	Ext. tooth lockwasher
37	YGHD150/200-37	30137	Truss hd. screw
38	YGHD200-38	30193	Nut
39	YGHD200-39	30195	Cover
40	YGHD200-40	30196	Base cover
41	YGHD150/200-41	30141	Capacitor cover
42	YGHD200-42	30197	Capacitor
43	YGHD150/200-43	30143	Truss hd. screw
44	YGHD150/200-44	30145	Washer
45	YGHD150/200-45	30146	Rubber pad
46	YGHD150/200-46	30147	Ext. tooth lockwasher
47	YGHD150/200-47	30148	Hex. nut
48	YGHD150/200-48	30149	Lockwasher
49	YGHD150/200-49	30150	Truss hd. screw
50	YGHD150-50A	64397	Base
51	YGHD150/200-51	30153	Switch 230V
52	YGHD150/200-52	30154	Switch mounting plate
53	YGHD150/200-53	30155	Truss hd. screw
54	YGHD150/200-54	30156	Grommet
55	YGHD200-55	30199	Hex. hd cap screw
56	YGHD200-56	30200	Tool rest - right hand
57	YGHD200-57	30202	Spark deflector - right hand
58	YGHD150/200-58	30160	Lock knob
59	YGHD150/200-59	30161	Washer
60	YGHD150/200-60	30163	Eye shield clamp bracket
61	YGHD150/200-61	30164	Eye shield mounting rod
62	YGHD150/200-62	30165	Sq. neck rd. hd. screw
63	YGHD150/200-63	30166	Eye shield
65	YGHD150/200-65	30167	Eye shield frame
66	YGHD150/200-66	30168	Truss hd. screw
67	YGHD150/200-67	30169	Hex. nut
68	YGHD150/200-68	30170	Washer
70	YGHD150/200-70	30171	Truss hd. screw
71	YGHD150/200-71	30172	Capacitor clamp
*	YGHD150/200	56366	Eye shield assembly

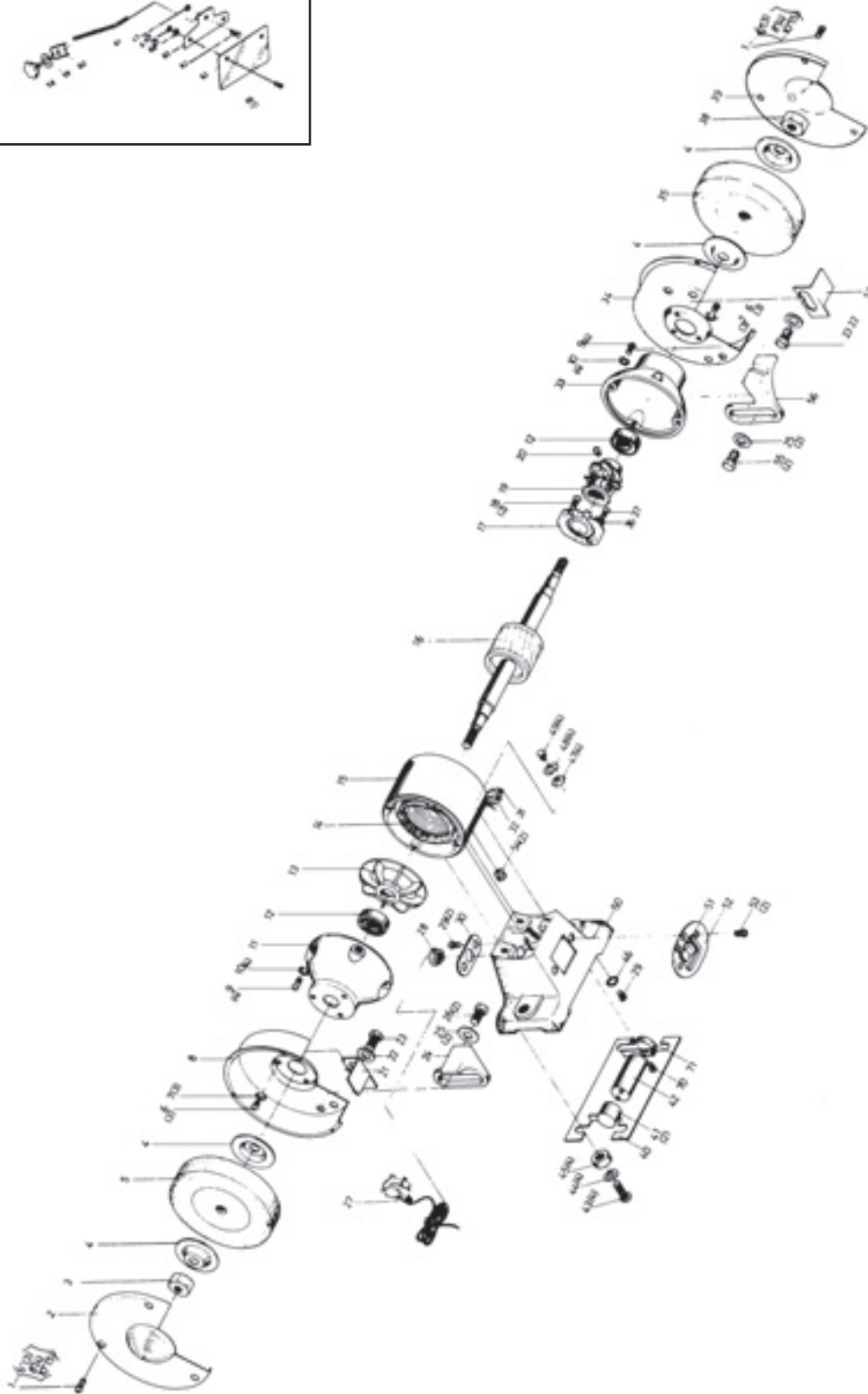
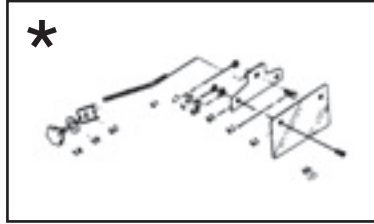


# 200mm HEAVY DUTY BENCH GRINDER

■ STOCK No.29621. ■ PART NO.GHD200.

## SPARE PARTS LISTING

12/2000



**Helpline: (023) 8049 4344. Sales Desk: (023) 8049 4333. General Enquiries: (023) 8026 6355.**