



INSTRUCTIONS FOR

MODULAR 5 DRAWER MOBILE CABINET 650MM

MODEL NO: **APMS58**

Thank you for purchasing a Sealey product. Manufactured to a high standard, this product will, if used according to these instructions, and properly maintained, give you years of trouble free performance.

IMPORTANT: PLEASE READ THESE INSTRUCTIONS CAREFULLY. NOTE THE SAFE OPERATIONAL REQUIREMENTS, WARNINGS & CAUTIONS. USE THE PRODUCT CORRECTLY AND WITH CARE FOR THE PURPOSE FOR WHICH IT IS INTENDED. FAILURE TO DO SO MAY CAUSE DAMAGE AND/OR PERSONAL INJURY AND WILL INVALIDATE THE WARRANTY. KEEP THESE INSTRUCTIONS SAFE FOR FUTURE USE.



Refer to Instructions

1. SAFETY

- WARNING!** Ensure Health & Safety, local authority, and general workshop practice regulations are adhered to when using this product.
- * **DO NOT** open more than one drawer at a time.
- * **DO NOT** step on the drawers.
- ✓ Ensure all drawers are fully closed before moving the cabinet.
- ✓ Secure the brakes when cabinet is in the desired position.
- ✓ Keep the work area clean, uncluttered and ensure there is adequate lighting.
- * **DO NOT** use in damp work areas.
- * **DO NOT** use the cabinet for any purpose other than that for which it was designed.
- * **DO NOT** use the cabinet outdoors.
- * **DO NOT** clean the cabinet with any solvents which may damage the surfaces or the protective coating.
- WARNING!** The warnings, cautions and instructions referred to in this instruction manual cannot cover all possible conditions and situations that may occur. It must be understood that common sense and caution are factors which cannot be built into this product, but must be applied by the operator

2. INTRODUCTION

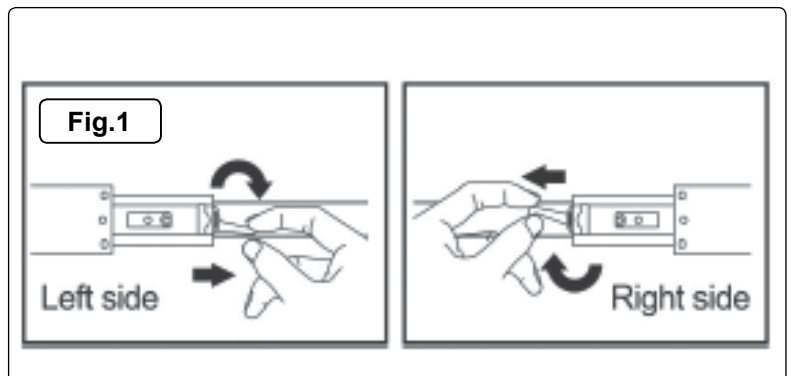
Modular storage system ideal for any garage/workshop. Durable construction that will last for years. Easily adjusts to specific needs. Purchase a simple base cabinet or create a full workshop storage system.

3. SPECIFICATION

Model no:**APMS58**
 Size (W x D x H):..... 650 x 458 x 732mm
 Small drawer (x2): 565 x 400 x 58mm
 Medium drawer (x3): 565 x 400 x 135mm

4. ASSEMBLY

- 4.1. **Fit castors**
 - 4.1.1. Carefully lay the cabinet onto its back, (use the outer packaging to prevent damage).
 - 4.1.2. Use screws from underneath to fix castors on. Fit braked castor on front corner of unit.
- 4.2. **Remove drawers**
 - 4.2.1. Push tab down on left side and push tab up on right side, pull drawer from slides.





Environmental Protection

Recycle unwanted materials instead of disposing of them as waste. All tools, accessories and packaging should be sorted, taken to a recycling centre and disposed of in a manner which is compatible with the environment. When the product becomes completely unserviceable and requires disposal, drain off any fluids (if applicable) into approved containers and dispose of the product and the fluids according to local regulations.

NOTE: It is our policy to continually improve products and as such we reserve the right to alter data, specifications and component parts without prior notice.

IMPORTANT: No liability is accepted for incorrect use of this product.

WARRANTY: Guarantee is 12 months from purchase date, proof of which will be required for any claim.



Sole UK Distributor, Sealey Group.
Kempson Way, Suffolk Business Park,
Bury St. Edmunds, Suffolk.
IP32 7AR



01284 757500



01284 703534



www.sealey.co.uk



sales@sealey.co.uk