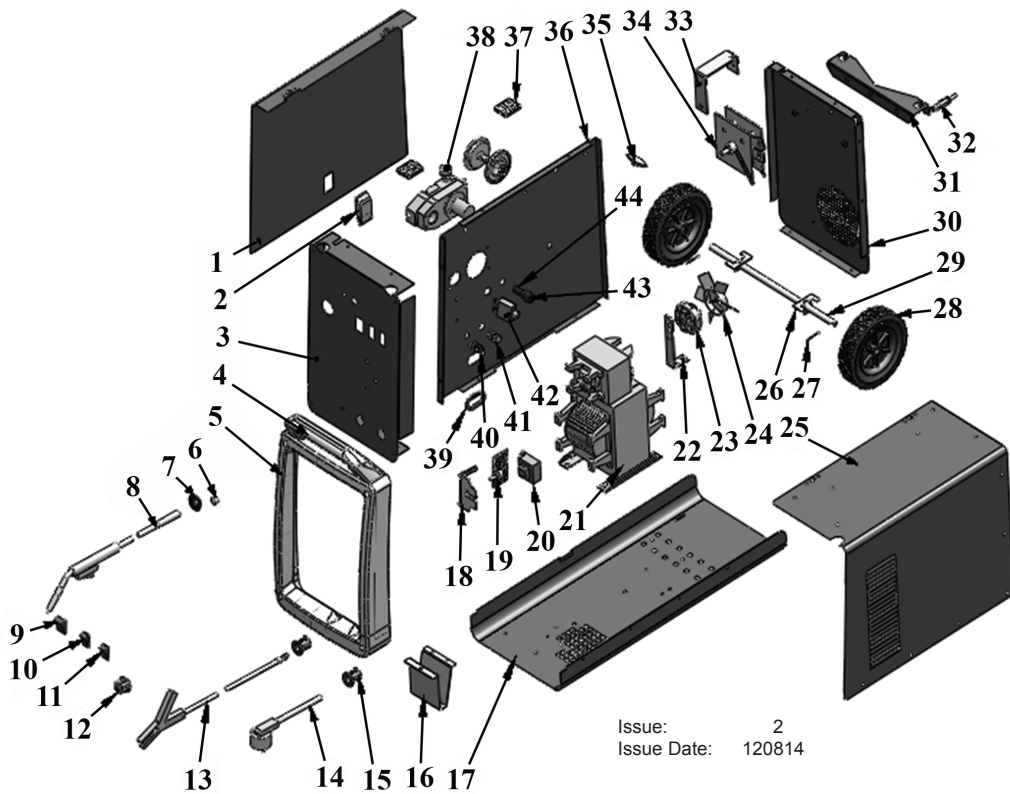




PARTS FOR:  
**PROFESSIONAL MIG WELDER 150Amp 230V**  
 MODEL: **SUPERMIG150.V3**

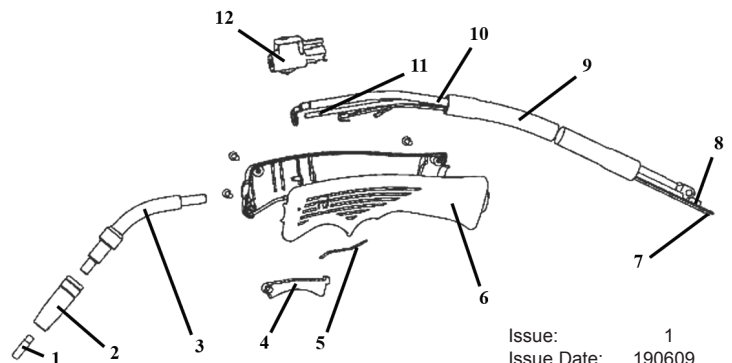


Issue: 2  
 Issue Date: 120814

ITEM	PART NO	DESCRIPTION	ITEM	PART NO	DESCRIPTION
1	SMIG150.V3-01	LEFT BOARD	23	SMIG150.V3-23	FAN BLADE
2	SMIG150.V3-02	DOOR LOCK	24	SMIG150.V3-24	RIGHT BOARD
3	SMIG150.V3-03	FRONT PANEL	25	SMIG150.V3-25	WHEEL AXLE BRACKET
4	SMIG150.V3-04	HANDLE	26	SMIG150.V3-26	PIN
5	SMIG150.V3-05	PLASTIC FRAME	27	SMIG150.V3-27	RUBBER WHEEL
6	SMIG150.V3-06	THERMAL INDICATOR	28	SMIG150.V3-28	WHEEL AXLE
7	SMIG150.V3-07	TORCH HOLDER	29	SMIG150.V3-29	REAR PANEL
8	SMIG150.V3-08	MIG TORCH	30	SMIG150.V3-30	GAS CYLINDER HOLDER
9	SMIG150.V3-09	SWITCH I	31	SMIG150.V3-31	GAS HOSE CONNECTOR
10	SMIG150.V3-10	SWITCH II	32	SMIG150.V3-32	RECTIFIER BRACKET
11	SMIG150.V3-11	POTENTIOMETER	33	SMIG150.V3-33	RECTIFIER
12	SMIG150.V3-12	GROUNDING CABLE	34	SMIG150.V3-34	THERMAL RELAY
13	SMIG150.V3-13	POWER CORD	35	SMIG150.V3-35	MIDDLE BOARD
14	SMIG150.V3-14	POWER CORD HOLDER	36	SMIG150.V3-36	HINGE
15	SMIG150.V3-15	FEET	37	SMIG150.V3-37	SPOOL HOLDER
16	SMIG150.V3-16	BASE	38	SMIG150.V3-38	WIRE FEEDER
17	SMIG150.V3-17	PCB SUPPORT	39	SMIG150.V3-39	COIL
18	SMIG150.V3-18	PCB	40	SMIG150.V3-40	WIRE POST (BLACK)
19	SMIG150.V3-19	CONTROL TRANSFORMER	41	SMIG150.V3-41	WIRE POST (RED)
20	SMIG150.V3-20	MAIN TRANSFORMER	42	SMIG150.V3-42	CIRCUIT BREAKER
21	SMIG150.V3-21	FAN BRACKET	43	SMIG150.V3-43	SUPPORT BLOCK
22	SMIG150.V3-22	FAN MOTOR	44	SMIG150.V3-44	FUSE

**TORCH PARTS**

ITEM	PART NO	DESCRIPTION
1	SMIG150.V3-8A	CONTACT TIP
2	SMIG150.V3-8B	NOZZLE
3	SMIG150.V3-8C	SWAN NECK
4	SMIG150.V3-8D	SWITCH
5	SMIG150.V3-8E	SWITCH CONTACT PLATE
6	SMIG150.V3-8F	TORCH HANDLE
7	SMIG150.V3-8G	CONTROL CABLE
8	SMIG150.V3-8H	GAS HOSE
9	SMIG150.V3-8I	PROTECTION TUBE
10	SMIG150.V3-8J	MAIN CABLE
11	SMIG150.V3-8K	LINER
12	SMIG150.V3-8L	GAS VALVE



Issue: 1  
 Issue Date: 190609

**NOTE:** It is our policy to continually improve products and as such we reserve the right to alter data, specifications and component parts without prior notice.

**IMPORTANT:** No liability is accepted for incorrect use of product.

**WARRANTY:** Guarantee is 12 months from purchase date, proof of which will be required for any claim.

**INFORMATION:** For a copy of our latest catalogue and promotions call us on 01284 757525 and leave your full name and address, including postcode.



Sole UK Distributor,  
 Sealey Group, Kempson Way,  
 Suffolk Business Park,  
 Bury St Edmunds, Suffolk, IP32 7AR



01284 757500



01284 703534



[www.sealey.co.uk](http://www.sealey.co.uk)



[sales@sealey.co.uk](mailto:sales@sealey.co.uk)