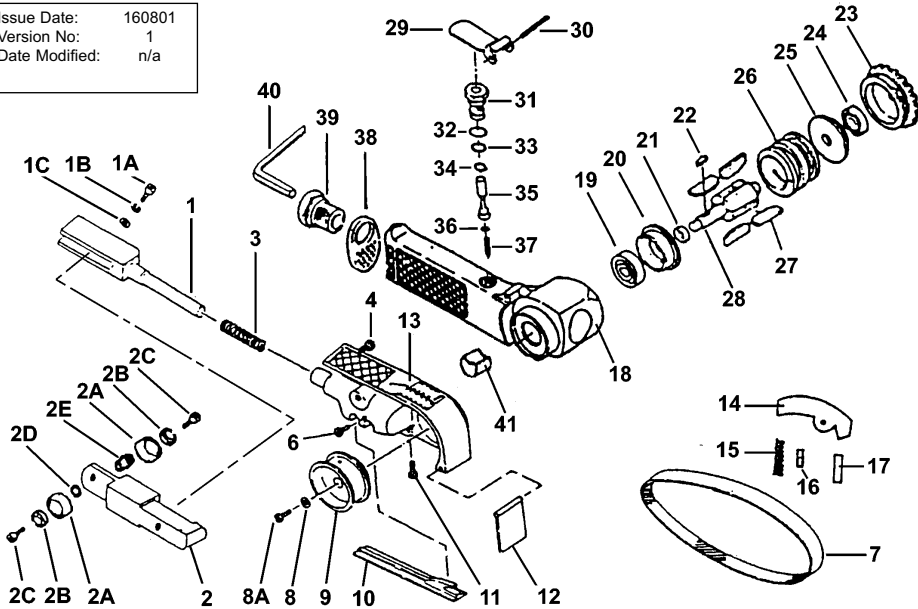


Issue Date: 160801  
Version No: 1  
Date Modified: n/a



Item	Part No.	Description
1	SA355A/01	Idle Pulley Bracket Assembly
1A	SA355A/01A	Set screw
1B	SA355A/01B	Spring
1C	SA355A/01C	Screw
2	SA355A/02	Idle Pulley Bracket Assembly
2A	SA355A/02A	Idle Pulley
2B	SA355A/02B	Bearing (B/686ZZ)
2C	SA355A/02C	Screw
2D	SA355A/02D	Spacer 10x13x3
2E	SA355A/02E	Ball Bearing Axle
3	SA355A/03	Spring
4	SA355A/04	Finger Pad Assembly
6	SA355A/06	Hex Socket Bolt 5x12
7	SA355A/07	Grinding Belt
8	SA355A/08	Washer
8A	SA355A/08A	Hex Socket Head Bolt
9	SA355A/09	Drive Pulley
10	SA355/10	Flat Shoe
11	SA355/11	Hex Socket Bolt 5x18
12	SA355/12	Dust Cover
13	SA355A/13	Guard body
14	SA355/14	Tension bar
15	SA355/15	Spring
16	SA355/16	Pin
17	SA355/17	Lever pin
18	SA355/18	Housing
19	SA355A/19	Ball bearing

Item	Part No.	Description
20	SA355/20	End plate, front
21	SA355/21	Spacer
22	SA355/22	Key, drive pulley
23	SA355A/23	Cap (A)
24	SA355A/24	Bearing (B/626ZZ)
25	SA355/25	End plate, rear
26	SA355/26	Cylinder
27	SA355/27	Vane
28	SA355/28	Rotor
29	SA355/29	Lever, throttle
30	SA355/30	Pin, lever
31	SA355/31	Body, valve
32	SA355/32	O-Ring, Upper valve body
33	SA355/33	O-Ring, Lower valve body
34	SA355/34	O-Ring, Upper valve stem
35	SA355/35	Stem, valve
36	SA355/36	O-Ring, Lower valve stem
37	SA355/37	Spring, valve
38	SA355/38	Deflector
39	SA355/39	Bush, Air inlet
40	SA355A/40	Hex wrench (4mm)
41	SA355A/41	Lock pin
	SA355/B60G	Belt, 60 Grit (pack of 5)
	SA355/B80G	Belt, 80 Grit (pack of 5)
	SA355/B100G	Belt, 100Grit (pack of 5)
	SA355/B120G	Belt, 120Grit (pack of 5)

**NOTE:** It is our policy to continually improve products and as such we reserve the right to alter data, specifications and component parts without prior notice. **IMPORTANT:** No liability is accepted for incorrect use of this equipment. **WARRANTY:** Guarantee is 12 months from purchase date, proof of which will be required for any claim. **INFORMATION:** For a copy of our latest catalogue and promotions call us on 01284 757525 and leave your full name and address, including postcode.



# INSTRUCTIONS FOR : AIR OPERATED 20mm BELT SANDER Model: SA355A

Thank you for purchasing a Sealey Product. Manufactured to a high standard this product will, if used according to these instructions and properly maintained, give you years of trouble free performance.

**IMPORTANT:** PLEASE READ THESE INSTRUCTIONS CAREFULLY. NOTE THE SAFE OPERATIONAL REQUIREMENTS, WARNINGS AND CAUTIONS. USE THIS PRODUCT CORRECTLY AND WITH CARE FOR THE PURPOSE FOR WHICH IT IS INTENDED. FAILURE TO DO SO MAY CAUSE DAMAGE AND/OR PERSONAL INJURY AND WILL INVALIDATE THE WARRANTY. PLEASE KEEP INSTRUCTIONS SAFE FOR FUTURE USE.

## 1. SAFETY INSTRUCTIONS

- ⚠ **WARNING!** Ensure Health & Safety, local authority, and general workshop practice regulations are adhered to when using this equipment.
- ⚠ **WARNING!** Disconnect from air supply before changing accessories or servicing.
- 3 Maintain the sander in good condition (use an authorised service agent).
- 3 Replace or repair damaged parts. Use genuine parts only. Unauthorised parts may be dangerous and will invalidate the warranty.
- 3 Use in suitable clean and tidy working area, free from unrelated materials and ensure there is adequate lighting.
- 3 Before each use check abrasive belt for condition. If worn or damaged replace immediately.
- 3 Use only the correct size and type of sanding belt with this sander.
- 3 Ensure there are no flammable or combustible materials near the work area.
- ⚠ **WARNING!** Always wear approved eye or face and hand protection when operating the sander.
- 3 Use face, dust, or respiratory protection in accordance with COSHH regulations.
- 3 Depending on the task, sander noise level may exceed 85dB, in which case wear safety ear defenders.
- 3 Remove ill fitting clothing. Remove ties, watches, rings, other loose jewellery and contain and/or tie back long hair.
- 3 Wear appropriate protective clothing and keep hands and body clear of working parts.
- 3 Maintain correct balance and footing. Ensure the floor is not slippery and wear non-slip shoes.
- 3 Keep children and unauthorised persons away from the work area.
- 3 Check moving parts alignment on a regular basis.
- 3 Ensure workpiece is secure before operating the sander. Never hold a workpiece by hand.
- 3 Check the workpiece to ensure there are no protruding screws, bolts, nuts, nails, rivets, etc.
- 3 Avoid unintentional starting.
- 3 Ensure the abrasive belt rating is the same as, or, greater than the RPM rating of the sander.
- ⚠ **WARNING!** Ensure correct air pressure is maintained and not exceeded. Recommended pressure 70-90psi.
- 3 Keep air hose away from heat, oil and sharp edges. Check air hose for wear before each use and ensure that all connections are secure.
- 3 Prolonged exposure to vibration from this sander poses a health risk. It is the owner's responsibility to correctly assess the potential hazard and issue guidelines for safe periods of use and offer suitable protective equipment.
- 7 DO NOT use the sander for a task it is not designed to perform.
- 7 DO NOT operate sander if any parts are damaged or missing as this may cause failure and/or personal injury.
- ⚠ **WARNING!** DO NOT sand any materials containing asbestos.
- 7 DO NOT carry the sander by the hose, or yank the hose from the air supply.
- 7 DO NOT force, or apply heavy pressure to, the sander, let the sander do the work.
- 7 DO NOT switch the sander on whilst the belt is in contact with the workpiece.
- 7 DO NOT operate sander when you are tired or under the influence of alcohol, drugs or intoxicating medication.
- 7 DO NOT use sander where there are flammable liquids, solids or gases such as paint solvents and including waste wiping or cleaning rags etc.
- 7 DO NOT carry the sander with your finger on the power lever.
- 7 DO NOT direct air from the air hose at yourself or others.
- 3 When not in use disconnect from air supply and store in a safe, dry, childproof location.
- 7 DO NOT get the sander wet or use in damp or wet locations, although the sanding disc may be used wet.
- 7 DO NOT place attachments close to your face and do not point at other persons or animals.

**SEALEY POWER PRODUCTS** Sole UK Distributor, Sealey Group, Bury St. Edmunds, Suffolk.  
01284 757500 01284 703534 E-mail: sales@sealey.co.uk



### 1.2. LEAD PAINT WARNING!

Paint once contained lead as a traditional ingredient. The dust from the removal of such paint is toxic if ingested/inhaled and must, therefore, be avoided. The following actions must be taken before using the sander on a surface that you suspect may contain lead paint.

1. User must determine potential hazard relating to age of paint to be removed. (Modern paints do not have lead content).
2. **DANGER!** Keep all persons and pets away from the work area. The following persons are particularly vulnerable to the effects of lead paint dust: *Expectant women, babies and children.*
3. We recommend personal protection by using the following safety items:
  - a) Paint Spray Respirator (Sealey ref. SSP16EN)
  - b) PE Coated Hooded Coverall (Sealey ref. SSP266).      c) Latex Gloves (Sealey ref. SSP24).
4. Take adequate measures to contain the paint dust, flakes and scrapings.
5. Continue to wear safety equipment as in (3) above and thoroughly clean all areas when task is complete. Ensure paint waste is disposed of in sealed bags or containers according to local regulations.

## 2. INTRODUCTION & SPECIFICATION

The SA355A Belt Sander features an articulated sanding arm, belt tracking control, heavy-duty nose roller and one-handed trigger operation. Suitable for sanding areas with limited access.

### Specification

Weight	.....	.0.9kg
Belt	.....	20 x 520mm
Air Pressure	.....	.90psi
Air Consumption	.....	.15cfm
Air Inlet	.....	1/4" BSP
Airborne noise	.....	.90.2dB (A)
	.....	.89.7dB (C)
Vibration level	.....	<2.5m/s <sup>2</sup>

## 3. PREPARING FOR USE

### 3.1. Air Supply

- 3.1.1. Ensure the sander air valve (or throttle) is in the "off" position before connecting to the air supply.
- 3.1.2. You will require an air pressure between 70-90psi, and an air flow of 15cfm.
- 3.1.3. **WARNING!** Ensure the air supply is clean and does not exceed 90 psi. Too high an air pressure and unclean air will shorten the product life due to excessive wear, and may be dangerous causing damage and/or personal injury.
- 3.1.4. Drain the air tank daily. Water in the air line will damage the sander **and will invalidate your warranty.**
- 3.1.5. Clean compressor air inlet filter weekly. Recommended hook-up procedure is shown in fig.1.
- 3.1.6. Line pressure should be increased to compensate for unusually long air hoses (over 8 metres). The minimum hose size should be 1/4" I.D. and fittings must have the same inside dimensions.
- 3.1.7. Keep hoses away from heat, oil and sharp edges. Check hoses for wear, and make certain that all connections are secure.

### 3.2. Couplings.

Vibration may cause failure if a quick change coupling is connected directly to the air sander. To overcome this, connect a leader hose to the sander. A quick change coupling may then be used to connect the leader hose to the air line recoil hose. See figs.1 & 2.

fig. 1

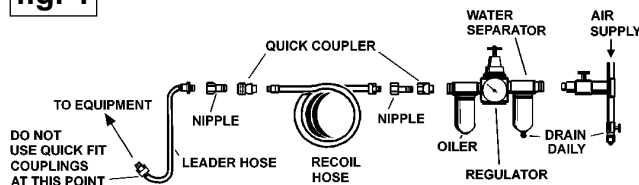
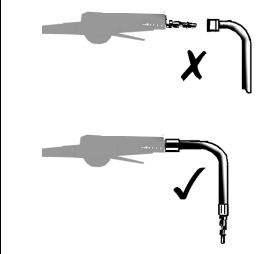


fig. 2



## 4. OPERATING INSTRUCTIONS

- 4.1. Unpack the product and check contents against the parts listed below. If there is anything damaged or missing contact your supplier immediately.

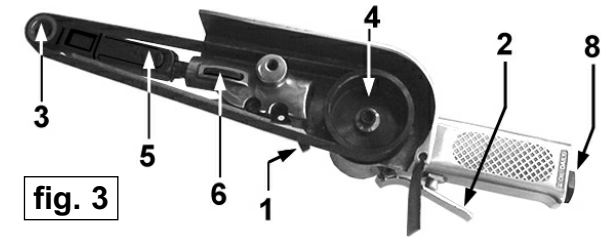


fig. 3

Contents:

- a) SA355A Belt Sander.
- b) Spare sanding Belt
- c) 2 x Hex. Key

**WARNING! Ensure that you have read and understood the safety instructions in Section 1.**

- 4.2. Loosening the clamp bolt ( see fig.3.1. ) allows the angle between the grip and the belt to be altered to suit the job in hand. After adjustment retighten the clamp bolt.
- 4.3. Once connected to the air supply the sander is started by squeezing the trigger (2).
- 4.4. To remove and replace the sanding belt push the idle pulley (3) towards the drive pulley (4) against spring pressure. The pulley bracket (5) will retract and lock allowing removal/fitting of the belt. When the new belt is in position release the pulley bracket by pushing in and holding the idle pulley, then press and hold the tension bar (6) whilst releasing the pressure on the idle pulley.
- 4.5. The tracking of the belt can be altered by adjusting the two recessed hex socket screws on the idle pulley bracket ( see fig.4 ). Loosen the locking screw 'A' using the hex key provided. Using the same key turn screw 'B' to alter the tracking. When the belt is running true, lock the setting by re-tightening bolt 'A'.

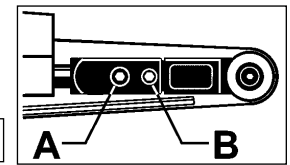


fig. 4

## 5. MAINTENANCE

- WARNING!** Disconnect sander from air supply before changing accessories, servicing or performing maintenance. Replace or repair damaged parts. *Use genuine parts only. Unauthorised parts may be dangerous and will invalidate the warranty.*
- 5.1. If the air supply system does not have an oiler lubricate the sander daily with a few drops of a good grade air tool oil, such as Sealey ATO/500 or ATO/1000, dripped into the air inlet (fig.3.8) before use.
  - 5.2. Clean the sander after use and change belt when required.
  - 5.3. Loss of power or erratic action may be due to the following:
    - a) Excessive drain on the air supply. Moisture or restriction in the air line. Incorrect size or type of hose connectors. To remedy, check the air supply and follow instructions in Section 3.
    - b) Grit or gum deposits in the sander may also reduce performance. If your model has an air filter (located in the area of the air inlet), remove the filter and clean it. Flush the sander out with gum solvent oil or an equal mixture of SAE No. 10 oil and kerosene. Allow to dry before use.
 If you continue to experience problems, contact your local Sealey service agent.
  - 5.4. For a full service contact your local Sealey service agent.
  - 5.5. When not in use, disconnect from air supply, clean and store in a safe, dry, childproof location.

## Declaration of Conformity



We, the sole importer into the UK, declare that the product listed here is in conformity with the following standards and directives. The construction file for this product is held by the Manufacturer and may be inspected, by a national authority, upon request to Jack Sealey Ltd.

### Air Operated 20mm Belt Sander Model SA355A

98/37/EC Machinery Directive  
93/68/EEC Marking Directive

Signed by Mark Sweetman

16th August 2001

For Jack Sealey Ltd. Sole distributor in the UK  
of Sealey Power Products.