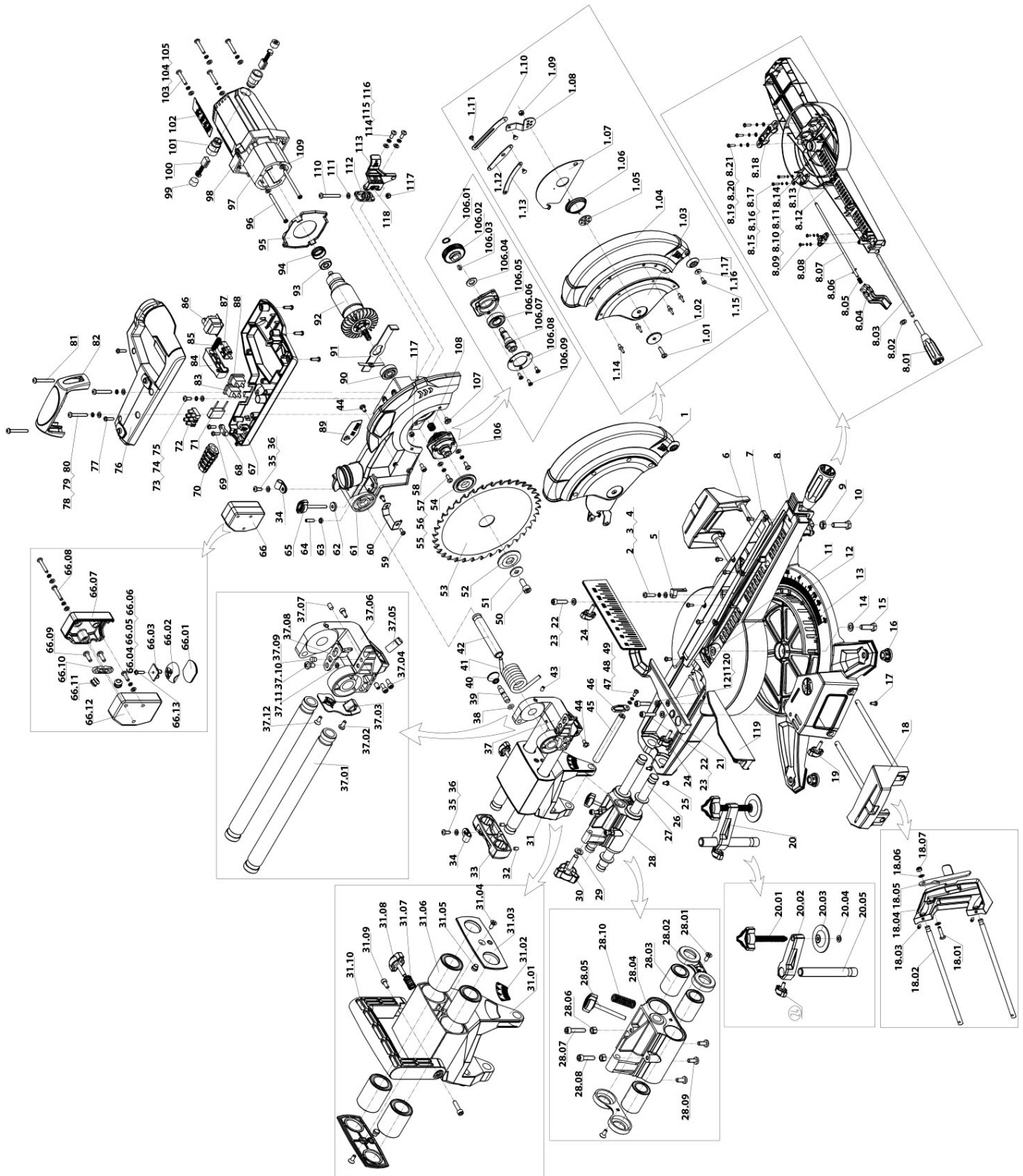


Parts Information: Double Sliding Compound Mitre Saw 250mm Model No: SMS255



NOTE: It is our policy to continually improve products and as such we reserve the right to alter data, specifications and component parts without prior notice.

IMPORTANT: No liability is accepted for incorrect use of product.

WARRANTY: Guarantee is 12 months from purchase date, proof of which will be required for any claim.

Sealey Group, Kempson Way, Suffolk Business Park, Bury St Edmunds, Suffolk. IP32 7AR



01284 757500



01284 703534



sales@sealey.co.uk



www.sealey.co.uk



Parts Information:
Double Sliding Compound Mitre Saw
250mm
Model No: SMS255

Item	Part No.	Description	Item	Part No.	Description
1	SMS255.01	LOWER GUARD ASSEMBLY	8.20	SMS255.8-20	SPRING WASHER 05
1.01	SMS255.1-01	SCREW (M5x20)	8.21	SMS255.8-21	SCREW (M5x16)
1.02	SMS255.1-02	WASHER	9	SMS255.9	SCREW (M8)
1.03	SMS255.1-03	LOWER GUARD MAIN PART	10	SMS255.10	HEXAGON SCREW M8X25
1.04	SMS255.1-04	LOWER GUARD TRANSPARENT PART	11	NLN8.S	NYLOC NUT M8 ZINC DIN 985 (SINGLE)
1.05	SMS255.1-05	LINKAGE METAL ROUND PLATE	12	SMS255.12	FLAT WASHER 08
1.06	SMS255.1-06	LINKAGE SPRING	13	SMS255.13	BASE
1.07	SMS255.1-07	LOWER GUARD STATIONERY PLATE	14	SMS255.14	WAVE WASHER 08
1.08	SMS255.1-08	LOWER GUARD ROTATABLE PLATE	15	SMS255.15	HEXAGON SCREW M8X30
1.09	SN5.S	STEEL NUT M5 ZINC DIN934 (SINGLE)	16	SMS255.16	RUBBER FOOT
1.10	SMS255.1-10	LINKAGE PLATE A	17	SMS255.17	SCREW (M4x8)
1.11	SMS255.1-11	RIVET	18	SMS255.18	EXTENSION TABLE ASSEMBLY
1.12	SMS255.1-12	LINKAGE PLATE B	18.01	SMS255.18-01	SCREW (M5x20)
1.13	SMS255.1-13	LINKAGE PLATE C	18.02	SMS255.18-02	EXTENSION TABLE SLIDING BAR
1.14	SMS255.1-14	RIVET	18.03	SMS255.18-03	SCREW (M5x8)
1.15	SMS255.1-15	SELF TAPPING SCREW ST4.2x8	18.04	SMS255.18-04	EXTENSION TABLE (L/R)
1.16	SMS255.1-16	WASHER M4	18.05	SMS255.18-05	EXTENSION STOP SHEET (L/R)
1.17	SMS255.1-17	ROLLER	18.06	SMS255.18-06	WAVE WASHER 08
2	SMS255.02	SCREW M5x16	18.07	NLN5.S	NYLOC NUT M5 ZINC DIN 985 (SINGLE)
3	SMS255.03	SPRING WASHER M5	19	SMS255.19	LOCK KNOB M6X20
4	SMS255.04	FLAT WASHER M5	20	SMS255.20	WORKCLAMP ASSEMBLY
5	SMS255.05	MITRE POINTER	20.01	SMS255.20-01	WORKCLAMP SCREW ROD
6	SMS255.06	SCREW M4x8	20.02	SMS255.20-02	WORKCLAMP BASE
7	SMS255.07	TURNABLE INSERT	20.03	SMS255.20-03	WORKCLAMP BOWL
8	SMS255.08	TURNTABLE ASSEMBLY	20.04	SMS255.20-04	O-RING 04
8.01	SMS255.8-01	MITRE LOCK KNOB	20.05	SMS255.20-05	WORKCLAMP SHAFT
8.02	SMS255.8-02	O-RING 6mm	21	SMS255.21	FENCE
8.03	SMS255.8-03	MITRE LOCK SHAFT	22	SMS255.22	SCREW (M6x25)
8.04	SMS255.8-04	MITRE LOCK RELEASE KNOB	23	SMS255.23	FLAT WASHER 06
8.05	SMS255.8-05	MITRE POSITIONING SHAFT SPRING	24	SMS255.24	SCREW (c/w PLASTIC KNOB) M6x12
8.06	SMS255.8-06	MITRE POSITIONING SHAFT PIN 3x18mm	25	SMS255.25	SCREW (M4X8)
8.07	SMS255.8-07	MITRE POSITIONING SHAFT	26	SMS255.26	LOWER SLIDING BAR
8.08	SMS255.8-08	MITRE LOCK FRONT SEAT	27	SMS255.27	RUBBER RING
8.09	SMS255.8-09	FLAT WASHER M4	28	SMS255.28	LOWER SLIDING ASSEMBLY
8.10	SMS255.8-10	SPRING WASHER M4	28.01	SMS255.28-01	SCREW (M4x8)
8.11	SMS255.8-11	SCREW M4x10	28.02	SMS255.28-02	LOWER SLIDING LINEAR BEARING COVER
8.12	SMS255.8-12	TURNTABLE	28.03	SMS255.28-03	LINEAR BEARING 16X28X37
8.13	SMS255.8-13	MITRE LOCK REAR SEAT	28.04	SMS255.28-04	SLIDING PIVOT BASE
8.14	SMS255.8-14	MITER LOCK FRICTION PLATE	28.05	SMS255.28-05	LOCKING KNOB (M6x35)
8.15	SMS255.8-15	FLAT WASHER 04	28.06	SMS255.28-06	SCREW (M6)
8.16	SMS255.8-16	SPRING WASHER 04	28.07	SMS255.28-07	SCREW (M6x25)
8.17	SMS255.8-17	SCREW (M4x10)	28.08	SMS255.28-08	SCREW (M6x20)
8.18	SMS255.8-18	LOWER SLIDING BAR FRONT SEAT	28.09	SMS255.28-09	SCREW (M5x16)
8.19	SMS255.8-19	FLAT WASHER 05	28.10	SMS255.28-10	KNOB SPRING

NOTE: It is our policy to continually improve products and as such we reserve the right to alter data, specifications and component parts without prior notice.

IMPORTANT: No liability is accepted for incorrect use of product.

WARRANTY: Guarantee is 12 months from purchase date, proof of which will be required for any claim.

Sealey Group, Kempson Way, Suffolk Business Park, Bury St Edmunds, Suffolk. IP32 7AR



01284 757500



01284 703534



sales@sealey.co.uk



www.sealey.co.uk



Parts Information:
Double Sliding Compound Mitre Saw
250mm
Model No: SMS255

Item	Part No.	Description
29	SMS255.29	FLAT WASHER 8
30	SMS255.30	BEVEL LOCK KNOB M8X35
31	SMS255.31	PIVOT ASSEMBLY
31.01	SMS255.31-01	PIVOT
31.02	SMS255.31-02	BEVEL SCALE
31.03	SMS255.31-03	UPPER SLIDING LINEAR BEARING COVER
31.04	SMS255.31-04	SCREW (M4x8)
31.05	SMS255.31-05	RUBBER BUMPER
31.06	SMS255.31-06	LINEAR BEARING 20X32X42
31.07	SMS255.31-07	KNOB SPRING
31.08	SMS255.31-8	LOCK KNOB (M6x20)
31.09	SMS255.31-09	SCREW (M6x14)
31.10	SMS255.31-10	REAR CARRY HANDLE
32	SMS255.32	SCREW (M5x8)
33	SMS255.33	UPPER SLIDING REAR BASE
34	SMS255.34	CABLE HOLDER
35	SMS255.35	FLAT WASHER 05
36	SMS255.36	SCREW (M5x12)
37	SMS255.37	UPPER SLIDING FRONT BASE ASSEMBLY
37.01	SMS255.37-01	SLIDING BAR
37.02	SMS255.37-02	SCREW (M4x8)
37.03	SMS255.37-03	LASER BASE
37.04	SMS255.37-04	SCREW (M4x10)
37.05	SMS255.37-5	LASER
37.06	SMS255.37-06	FRONT BASE OF UPPER SLIDING
37.07	SMS255.37-07	SCREW (M5x8)
37.08	SMS255.37-08	DEPTH ADJUSTING BLOCK
37.09	SMS255.37-09	PIN
37.10	SMS255.37-10	SCREW
37.11	SMS255.37-11	WAVE WASHER 05
37.12	SMS255.37-12	SCREW (M4x8)
38	SMS255.38	RUBBER O-RING 5X1.8G
39	SMS255.39	UPPERARM LOCK PIN
40	SMS255.40	UPPERARM LOCK BUTTON
41	SMS255.41	TORQUE SPRING
42	SMS255.42	UPPERARM SPINDLE
43	SMS255.43	SCREW (M5x8)
44	SMS255.44	SCREW
45	SMS255.45	BEVEL SPINDLE
46	SMS255.46	BEVEL POINTER
47	SMS255.47	SCREW (M4x10)
48	SMS255.48	SPRING WASHER 05
49	SMS255.49	FLAT WASHER 04
50	SCB820.S	SOCKET CAP BOLT ZINC M8X20

Item	Part No.	Description
51	SMS255.51	FLAT WASHER 08
52	SMS255.52	BLADE OUTER FLANGE
53	SMS255.53	CUT-OFF SAW BLADE 250 x 3.2mm 30mm 60tpu
54	SMS255.54	BLADE INNER FLANGE
55	SMS255.55	SCREW (M5x12)
56	SWM5.SB	SPRING WASHER M5 BLACK (SINGLE)
57	SMS255.57	FLAT WASHER 05
58	SMS255.58	SCREW (M5x10)
59	SMS255.59	SCREW (M4x10)
60	SMS255.60	SAFETY BLOCK
61	SMS255.61	UPPERARM
62	SN5.S	STEEL NUT M5 ZINC DIN934 (SINGLE)
63	SN5.S	STEEL NUT M5 ZINC DIN934 (SINGLE)
64	SMS255.64	SCREW (M5x16)
65	SMS255.65	LOCK KNOB M6X45
66	SMS255.66	LED ASSEMBLY
66.01	SMS255.66-01	LED BOX WINDOW
66.02	SMS255.66-02	LED BASE
66.03	SMS255.66-03	LED LIGHT
66.04	SMS255.66-04	SCREW (M4x10)
66.05	SMS255.66.05	SPRING WASHER 04
66.06	SMS255.66-06	FLAT WASHER 04
66.07	SMS255.66-07	LED BOX COVER
66.08	SMS255.66-08	SCREW (M4x30)
66.09	SMS255.66-09	SELF-TAPPING SCREW ST4.2X13
66.10	SMS255.66-10	LASER HOLDER
66.11	SMS255.66-11	LASER WIRE SLEEVE
66.12	SMS255.66-12	LED BOX BASE
66.13	SMS255.66-13	SELF-TAPPING SCREW ST2.9X6
67	SMS255.67	LOWER HANDLE
68	SMS255.68	CABLE HOLDER
69	SMS255.69	SELF-TAPPING SCREW ST4.2X16
70	SMS255.70	CABLE SLEEVE
71	SMS255.71	CAPACITOR 0.33 UF
72	SMS255.72	TERMINAL BLOCK
73	SMS255.73	SCREW (M5x12)
74	SMS255.74	SPRING WASHER 05
75	SMS255.75	FLAT WASHER 05
76	SMS255.76	UPPER HANDLE
77	SMS255.77	SELF-TAPPING SCREW ST4.2X16
78	SMS255.78	SCREW (M5x35)
79	SMS255.79	SPRING WASHER 05
80	SMS255.80	FLAT WASHER 05

NOTE: It is our policy to continually improve products and as such we reserve the right to alter data, specifications and component parts without prior notice.

IMPORTANT: No liability is accepted for incorrect use of product.

WARRANTY: Guarantee is 12 months from purchase date, proof of which will be required for any claim.

Sealey Group, Kempson Way, Suffolk Business Park, Bury St Edmunds, Suffolk. IP32 7AR



01284 757500



01284 703534



sales@sealey.co.uk



www.sealey.co.uk



Parts Information:
**Double Sliding Compound Mitre Saw
250mm
Model No: SMS255**

Item	Part No.	Description	Item	Part No.	Description
81	SMS255.81	SELF-TAPPING SCREW ST4.8X40	106.02	SMS255.106-2	GEAR
82	SMS255.82	CARRY HANDLE	106.03	SMS255.106-03	FLAT KEY 4X4X10
83	SMS255.83	LED SWITCH	106.04	SMS255.106-04	WAVE WASHER 012
84	SMS255.84	TRIGGER	106.05	SMS255.106-05	BEARING SEAT
85	SMS255.85	SPRING	106.06	B/6202	BEARING 6202
86	SMS255.86	TRANSFORMER	106.07	SMS255.106-7	OUTPUT SPINDLE
87	SMS255.87	ON/OFF SWITCH	106.08	SMS255.106-08	BEARING COVER
88	SMS255.88	LASER SWITCH	106.09	SMS255.106-09	SCREW (M4x8)
89	SMS255.89	BRAND LABEL	107	SMS255.107	SCREW FOR LOWER GUARD STATIONERY PLATE
90	B/6200Z	BEARING 6200Z	108	SMS255.108	ROLLER BEARING (K8X12X10)
91	SMS255.91	MOTOR LOCK BAR	109	SMS255.109	FLAT WASHER 04
92	SMS255.92	ARMATURE (1800W)	110	SMS255.110	SCREW (M5x40)
93	B/608	BEARING 608	111	SMS255.111	FLAT WASHER 05
94	SMS255.94	BEARING BUSHING	112	SMS255.112	LOWER GUARD LOCK BASE
95	SMS255.95	WIND GUIDER	113	SMS255.113	LOWER GUARD LOCK BUTTON
96	SMS255.96	SCREW ST4.2X65	114	SMS255.114	SCREW (M5X12)
97	SMS255.97	STATOR (1800W)	115	SMS255.115	SPRING WASHER 05
98	SMS255.98	MOTOR HOUSING	116	SMS255.116	FLAT WASHER 05
99	SMS255.99	CARBON BRUSH COVER	117	SN5.S	STEEL NUT M5 ZINC DIN934 (SINGLE)
100	SMS255.100	CARBON BRUSH	118	SMS255.118	LOWER GUARD LOCK SPRING
101	SMS255.101	CARBON BRUSH HOLDER	119	SMS255.119	SLIDING FENCE
102	SMS255.102	BRAND LABEL	120	SMS255.120	FLAT WASHER 05
103	SMS255.103	SCREW (M5x30)	121	SMS255.121	SCREW (M5x20)
104	SMS255.104	SPRING WASHER 05	--	SMS255.129	DUST COLLECTION BAG (NOT SHOWN)
105	SMS255.105	FLAT WASHER 05	--	SMS255B	MULTI-PURPOSE CUT-OFF SAW BLADE 250x2.4m (NOT SHOWN)
106	SMS255.106	GEARBOX ASSEMBLY			
106.01	SMS255.106-01	SPRING RING 012			

NOTE: It is our policy to continually improve products and as such we reserve the right to alter data, specifications and component parts without prior notice.

IMPORTANT: No liability is accepted for incorrect use of product.

WARRANTY: Guarantee is 12 months from purchase date, proof of which will be required for any claim.

Sealey Group, Kempson Way, Suffolk Business Park, Bury St Edmunds, Suffolk. IP32 7AR



01284 757500



01284 703534



sales@sealey.co.uk



www.sealey.co.uk