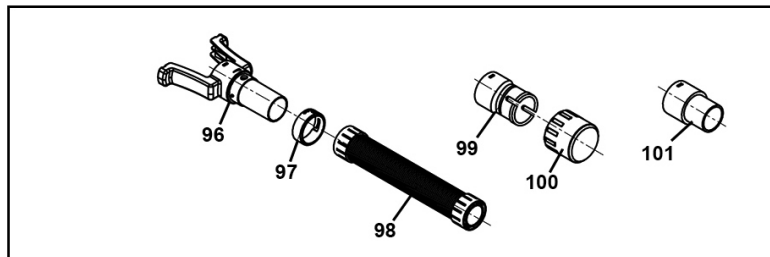
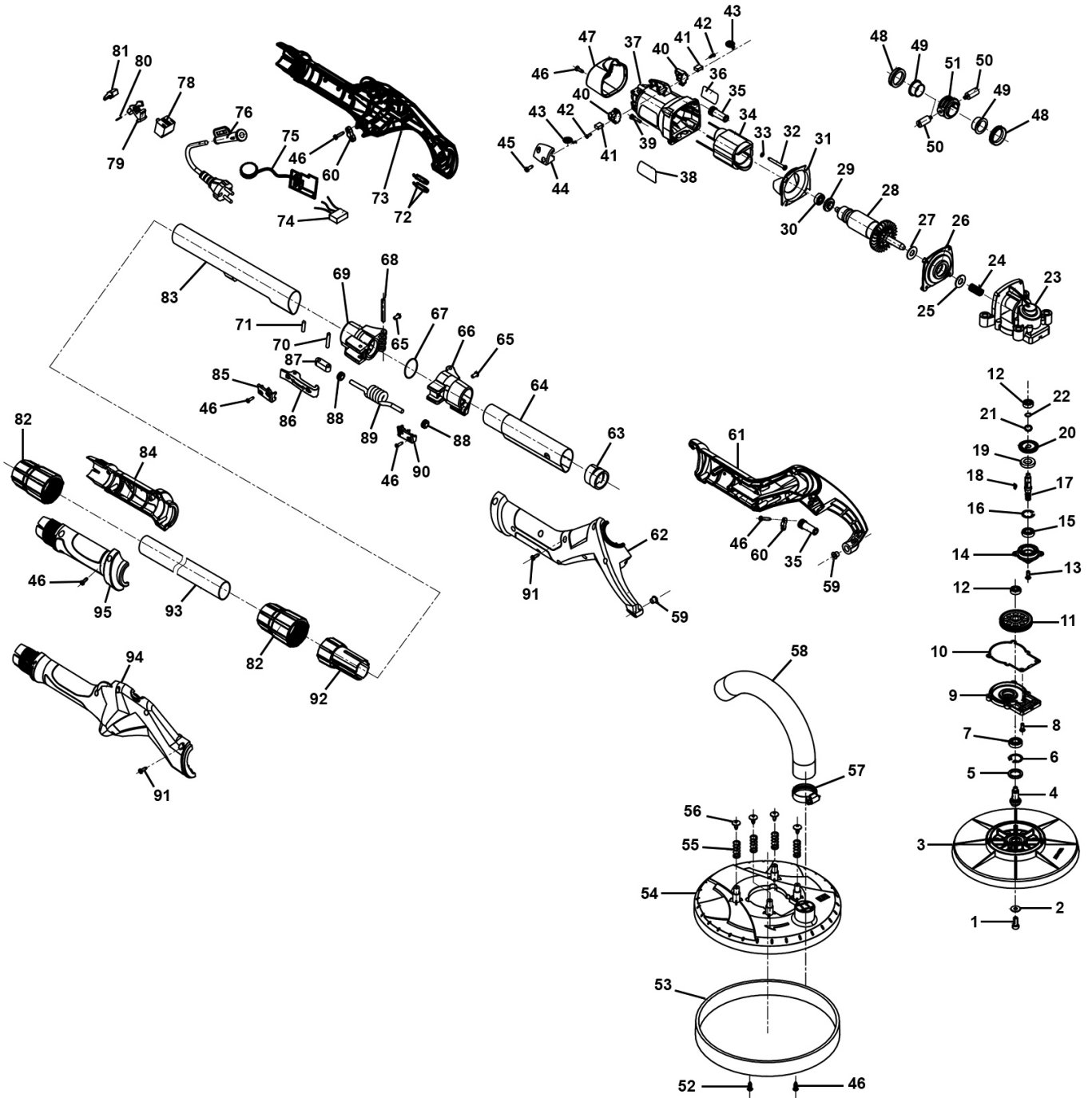




Parts Information:
Long Reach Dry Wall Electric Sander
Ø215mm 600W
Model No: TDWS600



NOTE: It is our policy to continually improve products and as such we reserve the right to alter data, specifications and component parts without prior notice. There may be alternative versions of this product, please contact us should you require this information.

IMPORTANT: No liability is accepted for incorrect use of product. Spare parts must be fitted by a competent person

WARRANTY: Guarantee is 12 months from purchase date, proof of which will be required for any claim.

Sealey Group, Kempson Way, Suffolk Business Park, Bury St Edmunds, Suffolk. IP32 7AR



01284 757500



01284 703534



sales@sealey.co.uk



www.sealey.co.uk



Parts Information:
Long Reach Dry Wall Electric Sander
Ø215mm 600W
Model No: TDWS600

Item	Part No.	Description	Qty
1	TDWS600-01	Pad Screw M6 x 15	1
2	FWM6.S	Flat Washer M6 Zinc	1
3	SSD05	Sanding Disc Ø215mm	1
4	TDWS600-04	Output Shaft	1
5	TDWS600-05	Oil Seal	1
6	TDWS600-06	Collar Ø22	1
7	B/6900ZZ	Bearing 6900zz	1
8	MSP46.S	Machine Screw Pan Head Phillips M4 X 6mm	6
9	TDWS600-09	Bearing Cover (A)	1
10	TDWS600-10	Gasket	1
11	TDWS600-11	End Gear	1
12	B/606Z	Bearing 606z	2
13	MSP412.S	Machine Screw Pan Head Phillips M4 X 12mm	4
14	TDWS600-14	Bearing Cover (B)	1
15	TDWS600-15	Ball Bearing 699Z	1
16	TDWS600-16	Collar Ø20	1
17	TDWS600-17	Main Drive Shaft	1
18	TDWS600-18	Key (3 x 3 x 10)	1
19	TDWS600-19	Ring for Main Drive Shaft	1
20	TDWS600-20	Tapered Gear	1
21	TDWS600-21	Copper Washer	1
22	TDWS600-22	Collar Ø9	1
23	TDWS600-23	Gearbox	1
24	TDWS600-24	Spring for Rotor	1
25	TDWS600-25	Felt Gasket	1
26	TDWS600-26	Middle Cover	1
27	TDWS600-27	Dust Washer	1
28	TDWS600-28	Rotor 600W	1
29	TDWS600-29	Dust Ring	1
30	B/607-2RS	Bearing 607-2rs	1
31	TDWS600-31	Fan Guard	1
32	TDWS600-32	Self-Tapping Screw ST4 x 55	2
33	TDWS600-33	Button	1
34	TDWS600-34	Stator 600W	1
35	TDWS600-35	Inner Sleeve	2
36	TDWS600-36	Label (Logo)	1
37	TDWS600-37	Motor Housing	1
38	TDWS600-38	Label (Spec)	1

Item	Part No.	Description	Qty
39	MSP420.S	Machine Screw Pan Head Phillips M4 x 20mm	4
40	TDWS600-40	Carbon Brush Holder (Pair)	2
41	TDWS600-41	Carbon Brush (Pair)	2
42	TDWS600-42	Carbon Brush Screw ST3x8 (Pair)	2
43	TDWS600-43	Carbon Brush Spring (Pair)	2
44	TDWS600-44	Protection Cover	1
45	SAG230.39	Self-Tapping Screw ST4x12-F	2
46	TDWS600-46	Self-Tapping Screw ST4 x 14	19
47	TDWS600-47	Rear Cover	1
48	TDWS600-48	Damping Ring	2
49	TDWS600-49	Rubber Sleeve	2
50	TDWS600-50	Side Pin for Movable Sleeve	2
51	TDWS600-51	Movable Sleeve	1
52	TDWS600-52	Self-Tapping Screw ST4 x 12	1
53	TDWS600-53	Protection Ring	1
54	TDWS600-54	Backing Pad	1
55	TDWS600-55	Spring	4
56	TDWS600-56	Screw 4 x 12	4
57	TDWS600-57	Hose Clip	1
58	TDWS600-58	Hose	1
59	TDWS600-59	Rubber Bung (Small)	2
60	SAG230.47	Cable Grip	2
61	TDWS600-61	Handle Stand, Left Side	1
62	TDWS600-62	Handle Stand, Right Side	1
63	TDWS600-63	Aluminium Pipe Connector	1
64	TDWS600-64	Aluminium Pipe	1
65	TDWS600-65	Clinch Bolt Ø5	2
66	TDWS600-66	Front Hinge Sleeve	1
67	TDWS600-67	O-Ring	1
68	TDWS600-68	Pin	1
69	TDWS600-69	Rear Hinge Sleeve	1
70	TDWS600-70	Pin Ø5 x 30	1
71	TDWS600-71	Pin Ø5 x 16.8	1
72	TDWS600-72	Cable Grip (B)	2
73	TDWS600-73	Main Handle, Right Side	1
74	TDWS600-74	Capacitor	1
75	TDWS600-75	Soft Start	1
76	TDWS600-76	Cable Sleeve (for Power Cord)	1

NOTE: It is our policy to continually improve products and as such we reserve the right to alter data, specifications and component parts without prior notice. There may be alternative versions of this product, please contact us should you require this information.

IMPORTANT: No liability is accepted for incorrect use of product. Spare parts must be fitted by a competent person

WARRANTY: Guarantee is 12 months from purchase date, proof of which will be required for any claim.

Sealey Group, Kempson Way, Suffolk Business Park, Bury St Edmunds, Suffolk. IP32 7AR



01284 757500



01284 703534



sales@sealey.co.uk



www.sealey.co.uk



Parts Information:
Long Reach Dry Wall Electric Sander
Ø215mm 600W
Model No: TDWS600

Item	Part No.	Description	Qty
78	TDWS600-78	Switch	1
79	TDWS600-79	Switch Push Lever	1
80	TDWS600-80	Pin	1
81	TDWS600-81	Switch Button	1
82	TDWS600-82	Connector	2
83	TDWS600-83	Aluminium Pipe	1
84	TDWS600-84	Sub-Handle, Right Side	1
85	TDWS600-85	Rear Hinge Sleeve Plate	1
86	TDWS600-86	Support Arm Hinge	1
87	TDWS600-87	Support Arm	1
88	TDWS600-88	Sleeve Ring	2
89	TDWS600-89	Coil Spring	1
90	TDWS600-90	Front Hinge Sleeve Plate	1

Item	Part No.	Description	Qty
91	TDWS600-91	Screw 4 x 16F	18
92	TDWS600-92	Aluminium Pipe Connector	1
93	TDWS600-93	Aluminium Pipe	1
94	TDWS600-94	Main Handle, Left Side	1
95	TDWS600-95	Sub-Handle, Left Side	1
96	TDWS600-96	Protection Connection Adaptor	1
97	TDWS600-97	Adjustable Ring	1
98	TDWS600-98	Flexible Hose 4.8m	1
99	TDWS600-99	Hose Connecting Adaptor	1
100	TDWS600-100	Adaptor Ø47	1
101	TDWS600-101	Adaptor Ø35	1
--	TDWS600-102	Wrench (not shown)	1

NOTE: It is our policy to continually improve products and as such we reserve the right to alter data, specifications and component parts without prior notice. There may be alternative versions of this product, please contact us should you require this information.

IMPORTANT: No liability is accepted for incorrect use of product. Spare parts must be fitted by a competent person

WARRANTY: Guarantee is 12 months from purchase date, proof of which will be required for any claim.

Sealey Group, Kempson Way, Suffolk Business Park, Bury St Edmunds, Suffolk. IP32 7AR



01284 757500



01284 703534



sales@sealey.co.uk



www.sealey.co.uk