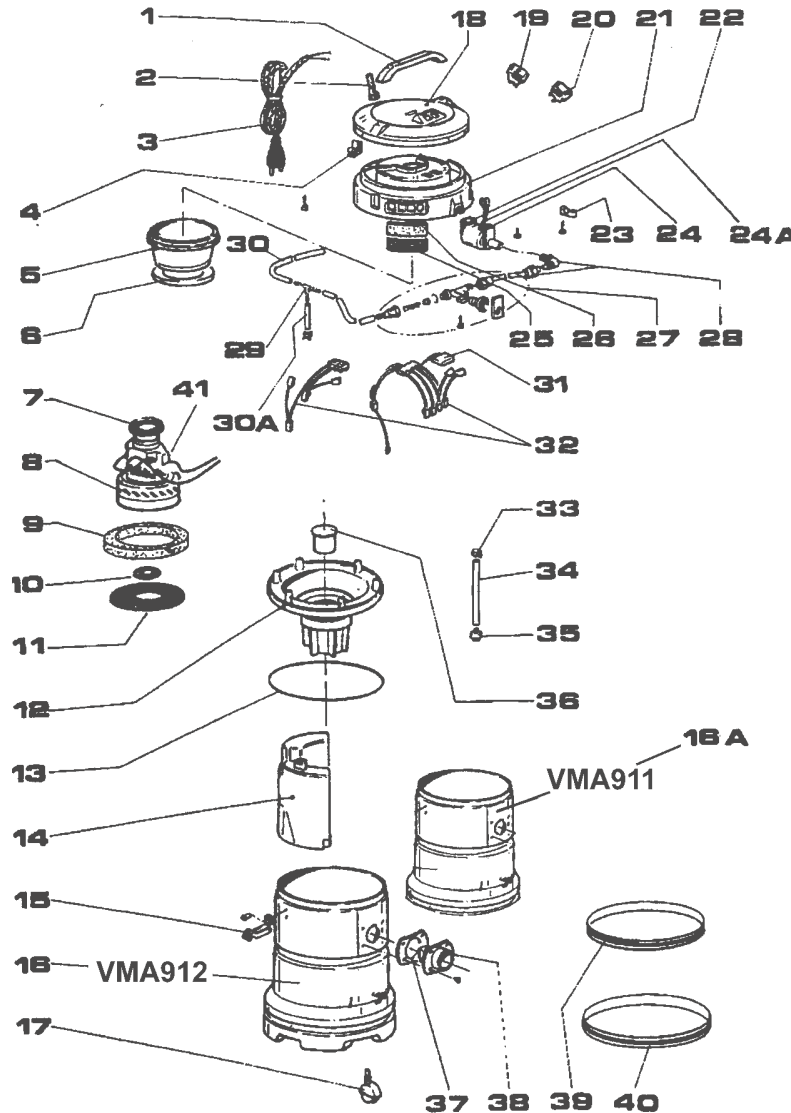


Original Date:- 190697
Issue Date:- 190607

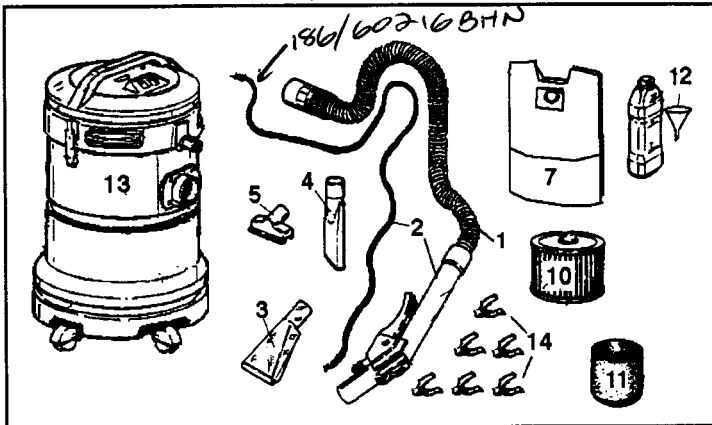
Version Nbr:- 1
Date Modified:- 010499



ITEM	PART	ITEM NAME
1	186/50118BHU	Handle
2	186/50036ZON	Sleeve
3	186/80047BON	Feeder
4	186/50182B8N	Cable Fastener
5	186/50104BHU	Diaphragm
6	186/70055BON	Gasket Motor, Middle
7	186/70060B8N	Gasket Motor, Upper
8	186/20036BOX	Motor 1000Wat
9	186/83020BHI	Silencer, Motor
10	186/50183BOV	Protection grill
11	186/70032BON	Motor Gasket, Lower
12	186/50179BOU	Cover, Lower
13	186/70011BON	Round Gasket
14	186/60213BHX	Liquid detergent tank
15	186/01017BOA	Bin Clip
16	186/60027BJA	Container VMA912
16A	186/50191BFU	Container VMA911
17	186/30086BOX	Pivoting wheel
18	186/50073BHU	Cover
19	186/80041BDN	Switch, ON/OFF
20	186/80043BOE	Switch, Pump
21	186/50070BHA	Motor cover
22	186/70121BHN	Pump, Rear
23	186/50078ZOX	Cable fastener
24	186/70120BHN	Pump, Front
24A	186/80299BHU	Pump
25	186/50170B8A	Air Vent
26	186/83021B8X	Filter grill
27	186/60307BHN	Quick Connection
28	186/60300BHN	Elbow Connection Pump
29	186/60301BHN	T-connection - rubber holder
30	186/60233BHN	Tube, PVC 340mm
30A	186/60227BHN	Tube, PVC 45mm
31	186/80025B8X	Antijamming filter
32	186/80102BHV	Connection Series
33	186/25130BHG	Washer
34	186/60229BHN	Tube, PVC 330mm
35	186/83030BHI	Pump Pick Up
36	186/50077BOV	Float
37	186/70082B5X	Gasket
38	186/50079BOA	Hose Inlet
39	186/60029BJU	Shock-proof band 96cm
40	186/60030BJU	Shock-proof band 112cm
41	186/80051BOX	Brush holder insert

2. PACKAGE CONTENTS

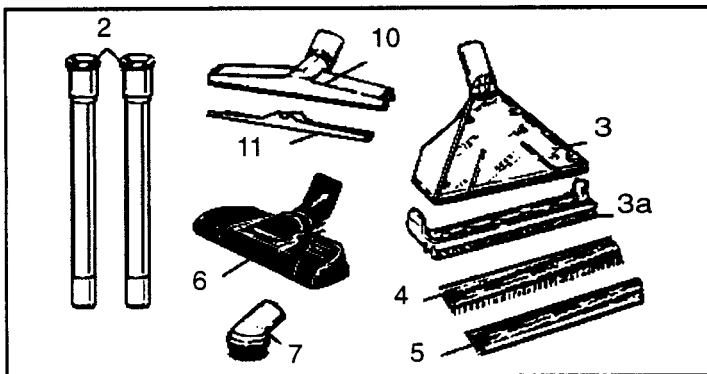
Note: Although the appearance of Model VMA913 differs from below illustration, the accessories are the same.



ITEM	PART NO	DESCRIPTION	QTY
1	186/01300BON	Flexible Hose	1
2	186/01333BHN	Detergent Delivery, Pistol System	1
3	186/01330BHN	Small Valeting Tool	1
4	186/60250BON	Narrow pick up nozzle	1
5	186/60252BON	100mm Pick Up nozzle	1
7	186/83100B8I	Vertical Paper Bag	1
10	VAC92DL	Cartridge Filter	1
11	186/83035BHB	Foam Filter	1
12	186/89051FHI	Bottle of Shampoo & Funnel	1
13	VMA912	Main Body	1
14	186/50318BHN	Clips (6 off)	1

3. CARPET CLEANING KIT (Optional)

For use as an industrial dry carpet cleaner, or wet carpet extraction cleaner in "Stand Up" mode, you will need to order Kit VMA912/CL10, which fits all models covered by these instructions.



ITEM	PART NO	DESCRIPTION	QTY
2	186/40335BHM	Stainless Steel Tubes	2
3	186/01331BHN	Rubber Washing Nozzle	1
3a	186/50372BHN	Adaptor for Large nozzle	1
4	186/30094BSX	Bristle Strip	1
5	186/70071BHN	Rubber Strip	1
6	186/95001FON	Carpet brush with articulated head for dry carpet cleaning	1
7	186/60255BON	Round Brush	1
10	186/60281BON	Frame for multi purpose brush	1
11	186/60278BON	Brush for Liquids	1

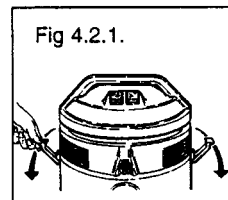
4. DRY VACUUM CLEANING



WARNING: The use of an incorrect filter or detergent, will invalidate the warranty.

If you wish to use the machine as a "DRY" car fabric cleaner, (no liquids involved), proceed as follows:

- 4.1. Ensure the machine is unplugged.
- 4.2. Remove the machine's Head and detergent tank, and fit the cartridge filter (Fig 4.2.1, 4.2.2, 4.2.3).



- 4.3. Reposition the head onto the drum body, and clip in place.
- 4.4. Connect flexible hose to tank.
- 4.5. Attach the appropriate end nozzle: Flat or Tapered Nozzles.
- 4.6. Plug in to power supply, and **PRESS THE BLACK SWITCH ONLY.**

You are now ready to use the Auto Valet machine as an ordinary vacuum cleaner for vacuuming car interiors.

- 4.7. When you have completed vacuuming, switch the **BLACK SWITCH OFF**, and unplug from the mains.
- 4.8. Empty the tank and wipe clean.

