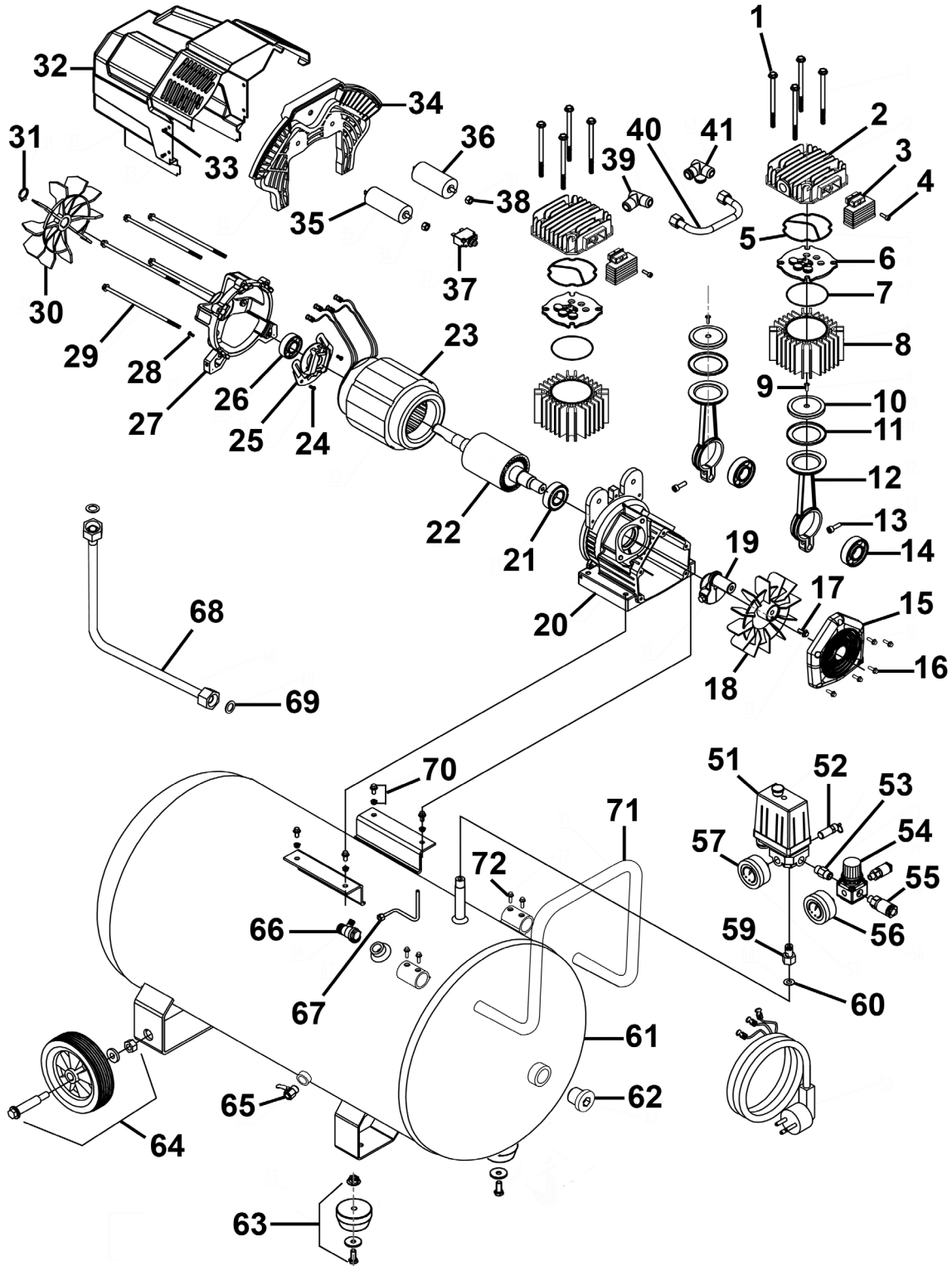


## SAC5002

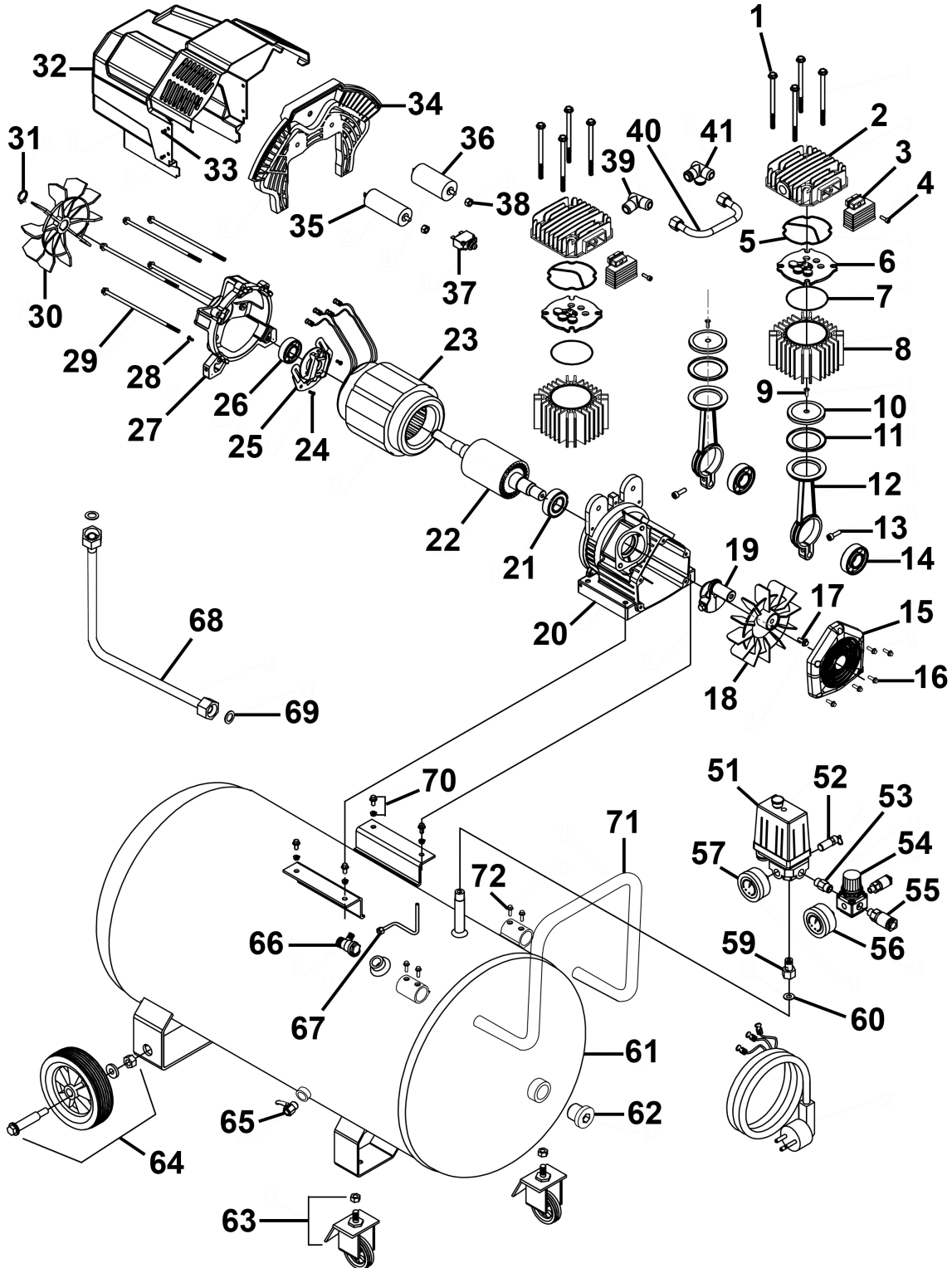


**NOTE:** It is our policy to continually improve products and as such we reserve the right to alter data, specifications and component parts without prior notice. There may be alternative versions of this product, please contact us should you require this information.

**IMPORTANT:** No liability is accepted for incorrect use of product. Spare parts must be fitted by a competent person

**WARRANTY:** Guarantee is 12 months from purchase date, proof of which will be required for any claim.

## SAC10002



**NOTE:** It is our policy to continually improve products and as such we reserve the right to alter data, specifications and component parts without prior notice. There may be alternative versions of this product, please contact us should you require this information.

**IMPORTANT:** No liability is accepted for incorrect use of product. Spare parts must be fitted by a competent person

**WARRANTY:** Guarantee is 12 months from purchase date, proof of which will be required for any claim.



Parts Information:  
**Air Compressor 50L & 100L V-Twin Oil Free  
 Direct Drive 3hp  
 Model No: SAC5002 & SAC10002**

Item	Part No.	Description	Qty
1	SAC10002-01	Cylinder Head Bolt M6x90	8
2	SAC10002-02	Cylinder Head	2
3	SAC10002-03	Air Filter	2
4	SAC10002-04	Fixing Bolt for Air Filter	2
5	SAC10002-05	Gasket Seal Ring for Cylinder Head	2
6	SAC10002-06	Valve Plate Assembly	2
7	SAC10002-07	Gasket Seal Ring for Cylinder	2
8	SAC10002-08	Cylinder	2
9	SAC10002-09	Bolt for Piston Cover	2
10	SAC10002-10	Piston Cover	2
11	SAC10002-11	Piston Ring Ø60mm	2
12	SAC10002-12	Conrod	2
13	SAC10002-13	Fixing Bolt for Conrod	2
14	B/6005	Bearing 6005	1
15	SAC10002-15	Crankcase End Cover (Plastic)	1
16	SAC10002-16	Fixing Bolt for End Cover	5
17	SAC10002-17	Fixing Bolt for Motor Fan	1
18	SAC10002-18	Crankcase Fan	1
19	SAC10002-19	Crankshaft	1
20	SAC10002-20	Crankcase	1
21	B/6205-2RS	Bearing 6205-2rs	1
22	SAC10002-22	Rotor	1
23	SAC10002-23	Stator	1
24	SAC10002-24	Fixing Bolt for Centrifugal Switch	2
25	SAC10002-25	Centrifugal Switch	1
26	B/6204	Bearing 6204	1
27	SAC10002-27	Motor Bracket	1
28	SAC10002-28	Earth Bolt	1
29	SAC10002-29	Motor Bolt M6x130	6
30	SAC10002-30	Motor Fan	1
31	SAC10002-31	Motor Fan Ring	1
32	SAC10002-32	Pump Cover	1
33	SAC10002-33	Fixing Bolt for Pump Cover	4
34	SAC10002-34	Pump Cover Support	1
35	SAC10002-35	Run Capacitor 50uF	1
36	SAC10002-36	Start Capacitor 200uF	1
37	SAC10002-37	Overload Trip Switch 12A	1

Item	Part No.	Description	Qty
38	SN8.S	Steel Nut M8 Zinc	2
39	SAC10002-39	Elbow	1
40	SAC10002-40	Connection Pipe	1
41	SAC10002-41	Elbow (Three-Way)	1
51	SAC10002-51	Pressure Switch 10 Bar	1
52	SAC10002-52	Safety Valve 1/4" 11 Bar	1
53	SAC10001S-63	Joint	1
54	SAC10001S-64	Filter Regulator	1
55	SAC10001S-65	Quick Coupler	2
56	SAC10002-56	Pressure Gauge 40mm (0-10-16Bar)	1
57	SAC10002-57	Pressure Gauge 50mm (0-10-16Bar)	1
59	SAC10001S-78	Pressure Switch Connection	1
60	SAC10001S-79	Sealing Gasket for Pressure Switch Connection	1
61	SAC5002-61	Tank 50ltr ( <b>SAC5002 Only</b> )	1
61	SAC10002-61	Tank 100ltr ( <b>SAC10002 Only</b> )	1
62	SAC5002-62	Tank Plug 1/2" (c/w Sealing Ring) ( <b>SAC5002 Only</b> )	1
62	SAC10002-62	Tank Plug 1" (c/w Sealing Ring) ( <b>SAC10002 Only</b> )	1
63	SAC5001S-72	Rubber Foot Set ( <b>SAC5002 Only</b> )	2
63	SAC10001S-72	Castor Wheel 2" ( <b>SAC10002 Only</b> )	2
64	SAC5001S-71	Fixed Wheel Set ( <b>SAC5002 Only</b> )	2
64	SAC10001S-71	Fixed Wheel Set ( <b>SAC10002 Only</b> )	2
65	SAC10001S-73	Drain Valve	1
66	SAC5002-66	Non-Return Valve ( <b>SAC5002 Only</b> )	2
66	SAC10001S-74	Non-Return Valve ( <b>SAC10002 Only</b> )	2
67	SAC10001S-75	Unloading Pipe ( <b>SAC5002 Only</b> )	1
67	SAC10002-67	Unloading Pipe ( <b>SAC10002 Only</b> )	1
68	SAC10002-68	Delivery Pipe	2
69	SAC10002-69	Sealing Gasket for Delivery Pipe	2
70	SAC10002-70	Fixng Bolt & Nut Ass'y	4
71	SAC5002-71	Tank Handle ( <b>SAC5002 Only</b> )	1
71	SAC10001S-77	Handle for Tank ( <b>SAC10002 Only</b> )	1
72	SAC5002-72	Handle Fixing Bolt ( <b>SAC5002 Only</b> )	4
72	SAC10001S-81	Handle Fixing Bolt ( <b>SAC10002 Only</b> )	4

**NOTE:** It is our policy to continually improve products and as such we reserve the right to alter data, specifications and component parts without prior notice. There may be alternative versions of this product, please contact us should you require this information.

**IMPORTANT:** No liability is accepted for incorrect use of product. Spare parts must be fitted by a competent person

**WARRANTY:** Guarantee is 12 months from purchase date, proof of which will be required for any claim.

Sealey Group, Kempson Way, Suffolk Business Park, Bury St Edmunds, Suffolk. IP32 7AR



01284 757500



sales@sealey.co.uk



www.sealey.co.uk