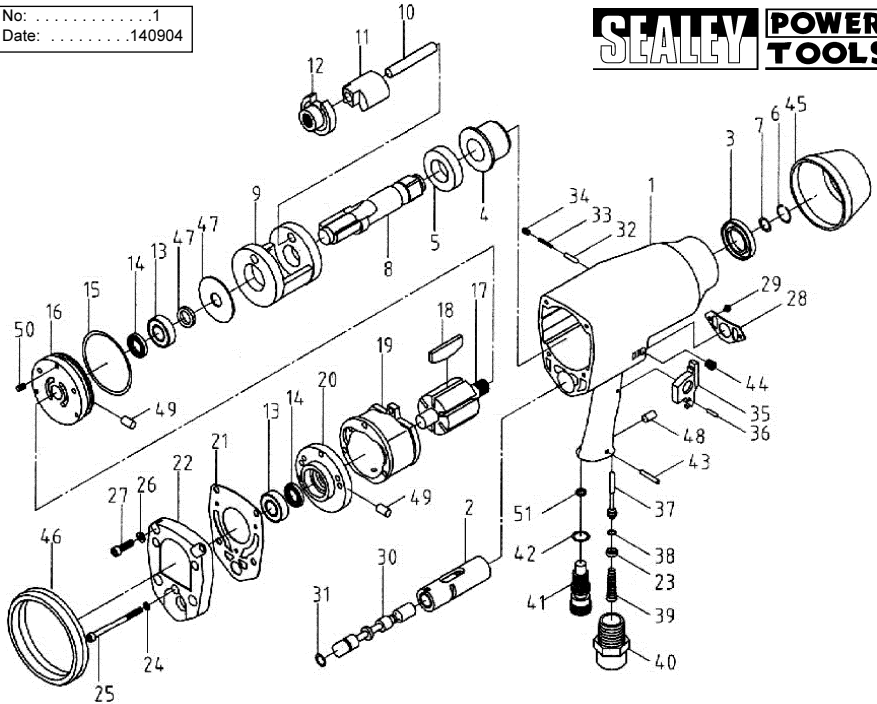


Issue No:1
 Issue Date:140904



Item	Part No	Description
10	SA4.V2-01	HOUSING
20	SA4.V2-02	VALVE SLEEVE
30	SA4.V2-03	OIL SEAL
40	SA4.V2-04	BUSHING
50	SA4.V2-05	WASHER
60	SA4.V2-06	ANVIL COLLET
70	SA4.V2-07	O-RING
80	SA4.V2-08	ANVIL
90	SA4.V2-09	HAMMER CAGE
100	SA4.V2-10	PIN
110	SA4.V2-11	HAMMER DOG
120	SA4.V2-12	DRIVE CAM
130	SA4.V2-13	BEARING(2)
140	SA4.V2-14	OIL SEAL(2)
150	SA4.V2-15	O-RING
160	SA4.V2-16	FRONT PLATE
170	SA4.V2-17	ROTOR
180	SA4.V2-18	ROTOR BLADE(6)
190	SA4.V2-19	CYLINDER
200	SA4.V2-20	END PLATE
210	SA4.V2-21	REAR GASKET
220	SA4.V2-22	REAR COVER
230	SA4.V2-23	BUSHING
240	SA4.V2-24	SPRING WASHER(3)
250	SA4.V2-25	SCREW(3)
260	SA4.V2-26	SPRING WASHER(4)

Item	Part No	Description
270	SA4.V2-27	SCREW(4)
280	SA4.V2-28	MUFFLE COVER
290	SA4.V2-29	SCREW(2)
300	SA4.V2-30	REVERSE VALVE
310	SA4.V2-31	O-RING
320	SA4.V2-32	PIN
330	SA4.V2-33	SPRING
340	SA4.V2-34	SCREW
350	SA4.V2-35	TRIGGER
360	SA4.V2-36	PIN
370	SA4.V2-37	VALVE STEM
380	SA4.V2-38	O-RING
390	SA4.V2-39	SPRING
400	SA4.V2-40	AIR INLET
410	SA4.V2-41	AIR REGULATOR
420	SA4.V2-42	O-RING
430	SA4.V2-43	PIN
440	SA4.V2-44	SCREW
450	SA4.V2-45	PROTECTING RUBBER
460	SA4.V2-46	RUBBER
470	SA4.V2-47A	WASHER
480	SA4.V2-47B	WASHER
490	SA4.V2-48	PLUG
500	SA4.V2-49	PLUG(4)
510	SA4.V2-50	SCREW THREAD INSERTS(3)
520	SA4.V2-51	OIL SEAL

NOTE: It is our policy to continually improve products and as such we reserve the right to alter data, specifications and component parts without prior notice. **IMPORTANT:** No liability is accepted for incorrect use of this equipment. **WARRANTY:** Guarantee is 12 months from purchase date, proof of which will be required for any claim. **INFORMATION:** Call us for a copy of our latest catalogue and promotions on 01284 757525 and leave your full name and address including your postcode.



Sole UK Distributor
 Sealey Group,
 Bury St. Edmunds, Suffolk.

01284 757500
 01284 703534

sales@sealey.co.uk
 www.sealey.co.uk