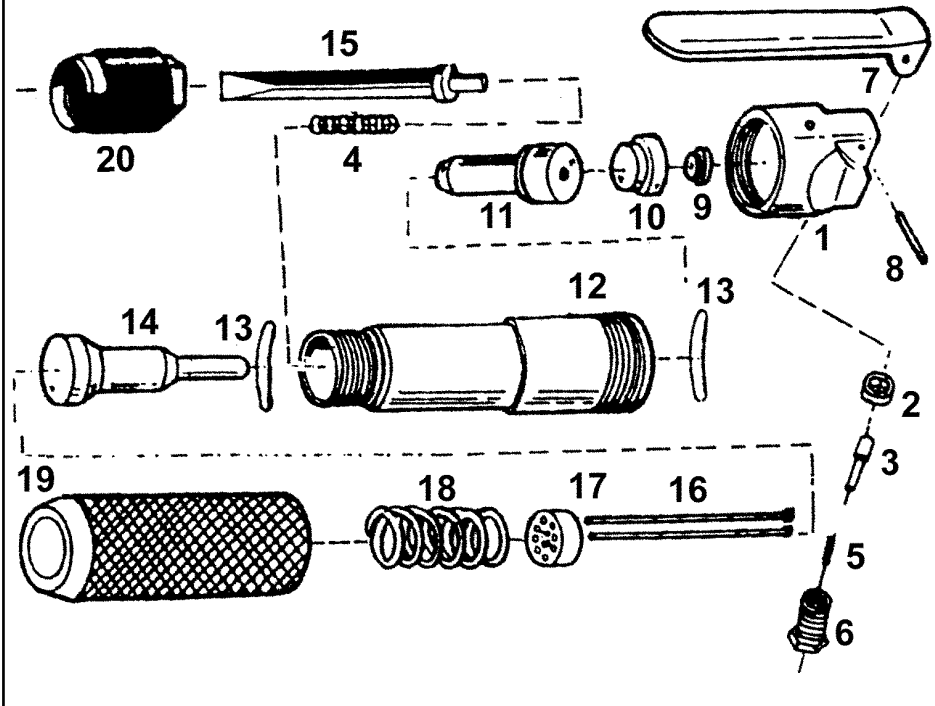


Issue: 2
 Date: 15/04/05



Item	Part No	Description	Item	Part No	Description	Item	Part No	Description
1	SA51/01	Backhead	8	SA51/08	Pin	15	SA52/15	Chisel
2	SA51/02	O-Ring	9	SA51/09	Rubber cushion	16	SA51/16	Needle (pack of 12)
3	SA51/03	Throttle valve	10	SA51/10	Rear valve block	17	SA51/17	Needle holder
4	SA52/04	Spring	11	SA51/11	Piston	18	SA52/18	Spring
5	SA51/05	Spring	12	SA51/12	Barrel sleeve	19	SA51/19	Needle tube
6	SA51/06	Valve cap	13	SA51/13	O-Ring	20	SA51/20	Nut
7	SA51/07	Lever	14	SA51/14	Needle driver			

NOTE: It is our policy to continually improve products and as such we reserve the right to alter data, specifications and component parts without prior notice.

IMPORTANT: No liability is accepted for incorrect use of this equipment.

WARRANTY: Guarantee is 12 months from purchase date, proof of which will be required for any claim.

INFORMATION: For a copy of our latest catalogue and promotions, call us on 01284 757525 and leave your full name and address including your postcode.

Thank you for purchasing a Sealey Product. Manufactured to a high standard this product will, if used according to these instructions and properly maintained, give you years of trouble free performance.

IMPORTANT: PLEASE READ THESE INSTRUCTIONS CAREFULLY. NOTE THE SAFE OPERATIONAL REQUIREMENTS, WARNINGS AND CAUTIONS. USE THIS PRODUCT CORRECTLY AND WITH CARE FOR THE PURPOSE FOR WHICH IT IS INTENDED. FAILURE TO DO SO MAY CAUSE DAMAGE AND/OR PERSONAL INJURY AND WILL INVALIDATE THE WARRANTY. PLEASE KEEP INSTRUCTIONS SAFE FOR FUTURE USE.

1. SAFETY INSTRUCTIONS

- WARNING!** Ensure health & safety, local authority, and general workshop practice regulations are adhered to when using this equipment.
- WARNING!** Disconnect from air supply before changing accessories or servicing.
- ✓ Maintain the tool in good condition and replace any damaged or worn parts. Use genuine parts only. Unauthorised parts may be dangerous and will invalidate the warranty.
- WARNING!** Check correct air pressure is maintained and not exceeded. We recommend 90psi.
- ✓ Keep air hose away from heat, oil and sharp edges. Check air hose for wear before each use and ensure that all connections are secure.
- ✓ Only use needles which are specifically designed for use with the needle scaler.
- ✓ Wear approved safety eye/face shield, ear defenders, and hand protection.
- ✓ Maintain correct balance and footing. Ensure the floor is not slippery and wear non-slip shoes.
- ✓ Keep children and non essential persons away from the working area.
- ✗ DO NOT use the tool for a task it is not designed to perform.
- WARNING! DO NOT** use tool if damaged or thought to be faulty. (Contact Sealey service agent).
- ✗ DO NOT use tool unless you have been instructed in its use by a qualified person.
- ✗ DO NOT carry the tool by the air hose, or yank the hose from the air supply.
- ✗ DO NOT operate tool if you are tired or under the influence of alcohol, drugs or intoxicating medication.
- ✗ DO NOT carry tool with your hand on the power trigger in order to avoid unintentional starting.
- ✗ DO NOT direct air from the air hose at yourself or others.
- ✓ When not in use disconnect from air supply and store in a safe, dry, childproof location.

2. INTRODUCTION & SPECIFICATIONS

The SA52 is a straight type air hammer supplied with interchangeable needle and chisel heads. Suitable for cleaning heavy paint and rust scale from metal surfaces. Palm control trigger mechanism. Replaceable scaler needle set.

Stroke 16mm
 Free speed 4000bpm
 Air consumption 4cfm
 Noise level 92.8dB(A)

Operating pressure 90psi
 Air inlet size 1/4" BSP
 Weight 1.2kg
 Vibration 1.8m/s²