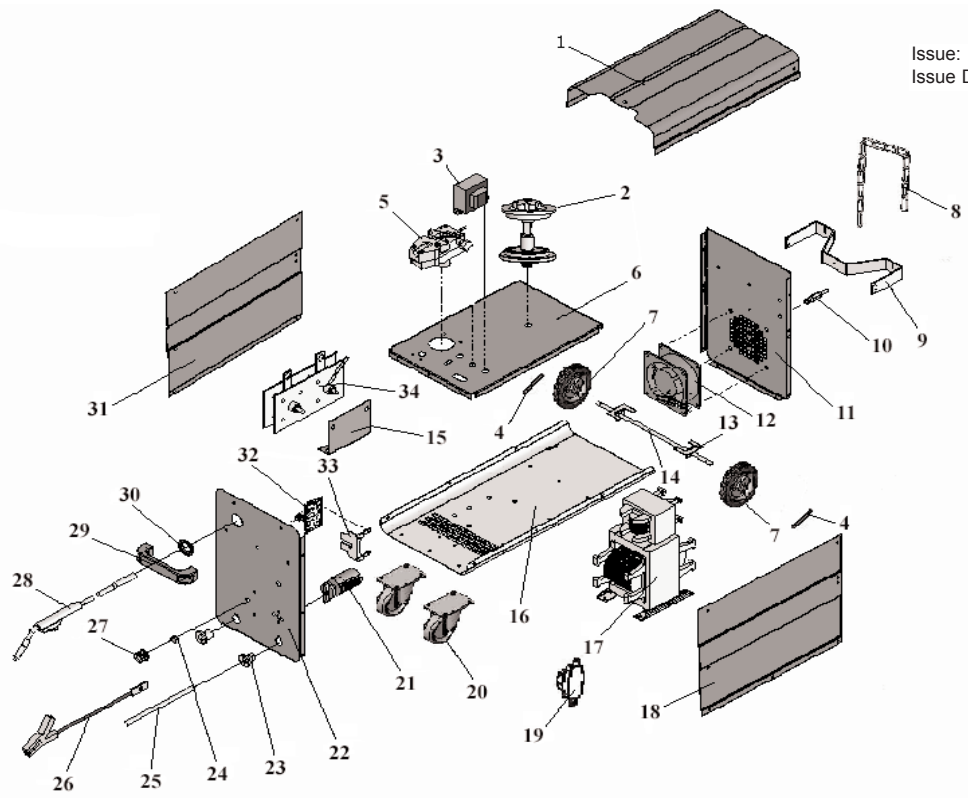




**PARTS LIST**  
**MIG WELDER**  
**180Amp 230V**

**STOCK CODE**  
**S0817**

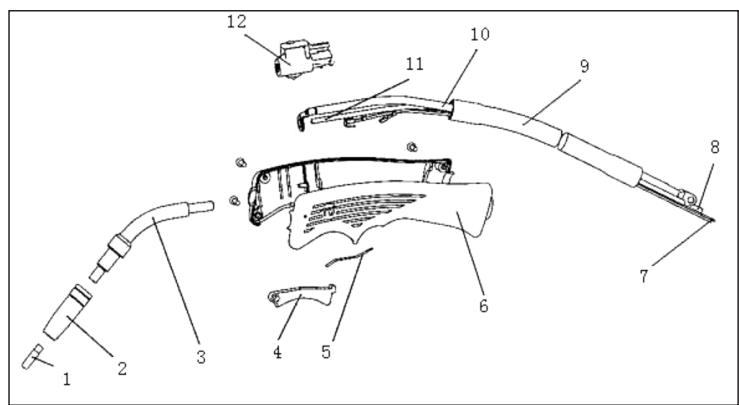
Issue: 1  
Issue Date: 040208



ITEM	PART NO	DESCRIPTION	ITEM	PART NO	DESCRIPTION
1	S0816.01	TOP COVER	18	S0817.18	RIGHT SIDE PANEL
2	S0816.02	SPOOL HOLDER	19	S0816.19	THERMAL RELAY
3	S0816.03	CONTROL TRANSFORMER	20	S0817.20	CASTOR
4	S0816.04	PIN	21	S0817.21	SWITCH
5	S0816.05	WIRE FEED MOTOR	22	S0817.22	FRONT PANEL
6	S0816.06	MIDDLE BOARD	23	S0816.23	CABLE HOLDER
7	S0816.07	WHEEL	24	S0816.24	INDICATOR
8	S0816.08	CHAIN	25	S0816.25	MAINS CABLE
9	S0817.09	GAS BOTTLE HOLDER	26	S0817.26	EARTH CABLE
10	S0816.10	GAS CONNECTOR	27	S0816.27	POTENTIOMETER KNOB
11	S0817.11	BACK PANEL	28	S0816.28	TORCH
12	S0816.12	FAN	29	S0816.29	HANDLE
13	S0816.13	WHEEL AXLE HOLDER	30	S0816.30	TORCH HOLDER
14	S0816.14	WHEEL AXLE	31	S0817.31	LEFT SIDE PANEL
15	S0817.15	RECTIFIER HOLDER	32	S0816.32	PCB HOLDER
16	S0817.16	BOTTOM	33	S0816.33	PCB
17	S0817.17	TRANSFORMER	34	S0817.34	RECTIFIER

**PARTS FOR TORCH**

ITEM	PART NO	DESCRIPTION
1	120/722415	CONTACT TIP 0.6mm
	120/722416	CONTACT TIP 0.8mm
2	120/722423	CONICAL NOZZLE
3	S0771.27-3	SWAN NECK
4	S0771.27-4	SWITCH
5	S0771.27-5	SWITCH CONTACT PLATE
6	S0771.27-6	TORCH HANDLE
7	S0771.27-7	CONTROL CABLE
8	S0771.27-8	GAS HOSE
9	S0771.27-9	PROTECTION TUBE
10	S0771.27-10	MAIN CABLE
11	S0771.27-11	LINER
12	S0771.27-12	GAS VALVE



**NOTE:** It is our policy to continually improve products and as such we reserve the right to alter data, specifications and component parts without prior notice.  
**IMPORTANT:** No liability is accepted for incorrect use of this equipment. **WARRANTY:** Guarantee 12 months from purchase date, proof of which will be required for any claim.