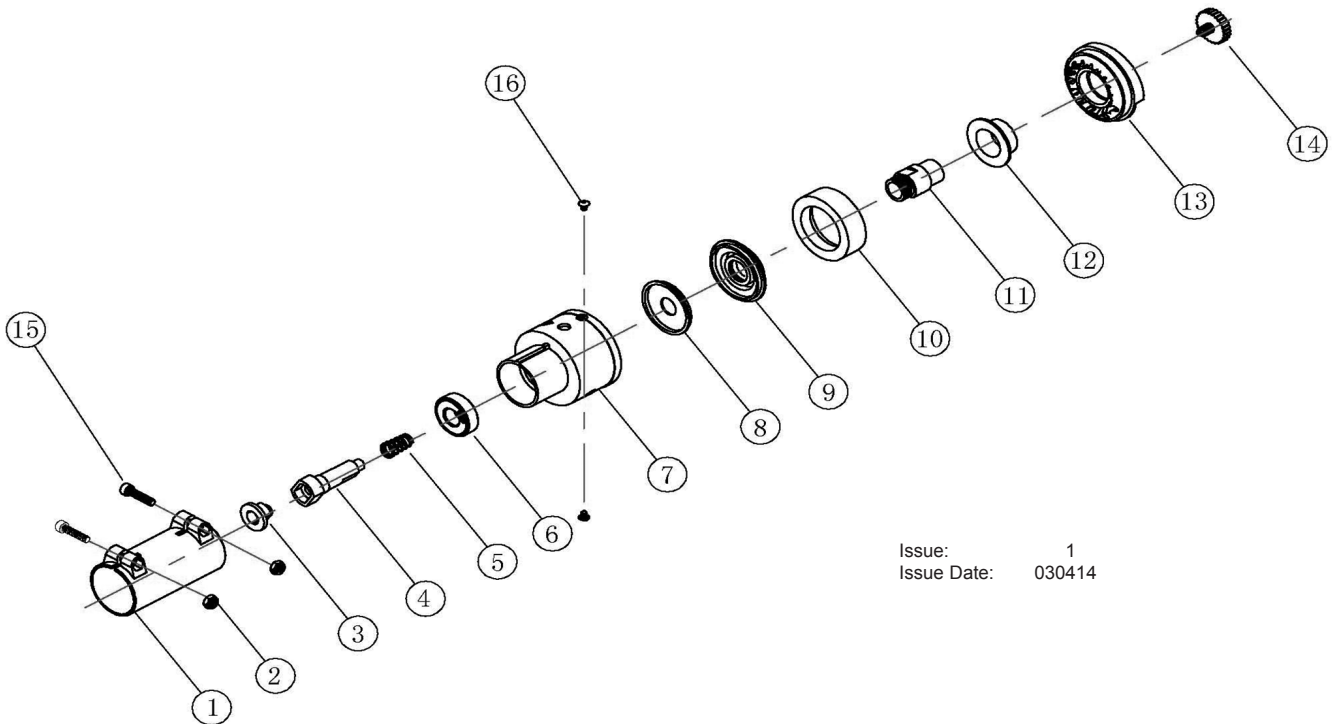




PARTS FOR:
MANUAL DRILL BIT SHARPENER
MODEL: **SMS2001M**



Issue: 1
Issue Date: 030414

ITEM	PART NO	DESCRIPTION
1	SMS2001M.01	TRANSITION SET
2	SMS2001M.02	LOCKNUT (M6)
3	SMS2001M.03	CONNECTOR
4	SMS2001M.04	OUTPUT SHAFT
5	SMS2001M.05	SPRING
6	SMS2001M.06	BEARING (626)
7	SMS2001M.07	FRONT SLEEVE
8	SMS2001M.08	SHUTTER
9	SMS2001M.09	DISC PLATE
10	SMS2001M.10	DISC
11	SMS2001M.11	FIXED AXIS
12	SMS2001M.12	STEEL SLEEVE
13	SMS2001M.13	FRONT COVER
14	SMS2001M.14	KNOB
15	SMS2001M.15	BOLT (M6)
16	SMS2001M.16	SCREW (M4)

NOTE: It is our policy to continually improve products and as such we reserve the right to alter data, specifications and component parts without prior notice.

IMPORTANT: No liability is accepted for incorrect use of product.

WARRANTY: Guarantee is 12 months from purchase date, proof of which will be required for any claim.

INFORMATION: For a copy of our latest catalogue and promotions call us on 01284 757525 and leave your full name and address, including postcode.



Sole UK Distributor,
Sealey Group, Kempson Way,
Suffolk Business Park,
Bury St Edmunds, Suffolk, IP32 7AR



01284 757500



01284 703534



www.sealey.co.uk



sales@sealey.co.uk